

# A COMPREHENSIVE PLAN FOR THE DEVELOPMENT OF COMMUNITY CENTERS IN ALACHUA COUNTY

*“Restore your community today for a more sustainable tomorrow.”*

# Background: Alachua County, Florida

- ⦿ Known for its diverse culture, music, and artists
- ⦿ Home to the University of Florida
  - Largest university in the state
  - Most of economy revolves around the university
- ⦿ Median income for a family, \$46, 587

# Background: Poverty

- Over 20% of population living in poverty (~50,000 people)
- Approximately 8,000 are children
- 1,200 people are considered homeless
- Approximately 30% are children

# Background: Crime

- On average 400 child neglect incidences annually
- On average 2,0000 domestic violence incidences annually

# Alachua County

- ⦿ North Central Florida
- ⦿ Bordered by 8 counties
  - Union, Bradford, Clay, Putnam, Marion, Levy, Gilchrist, and Columbia
- ⦿ Nine Municipalities
  - Alachua
  - Archer
  - Newberry
  - High Springs
  - Lacrosse
  - Waldo
  - Gainesville
  - Micanopy
  - Hawthorne



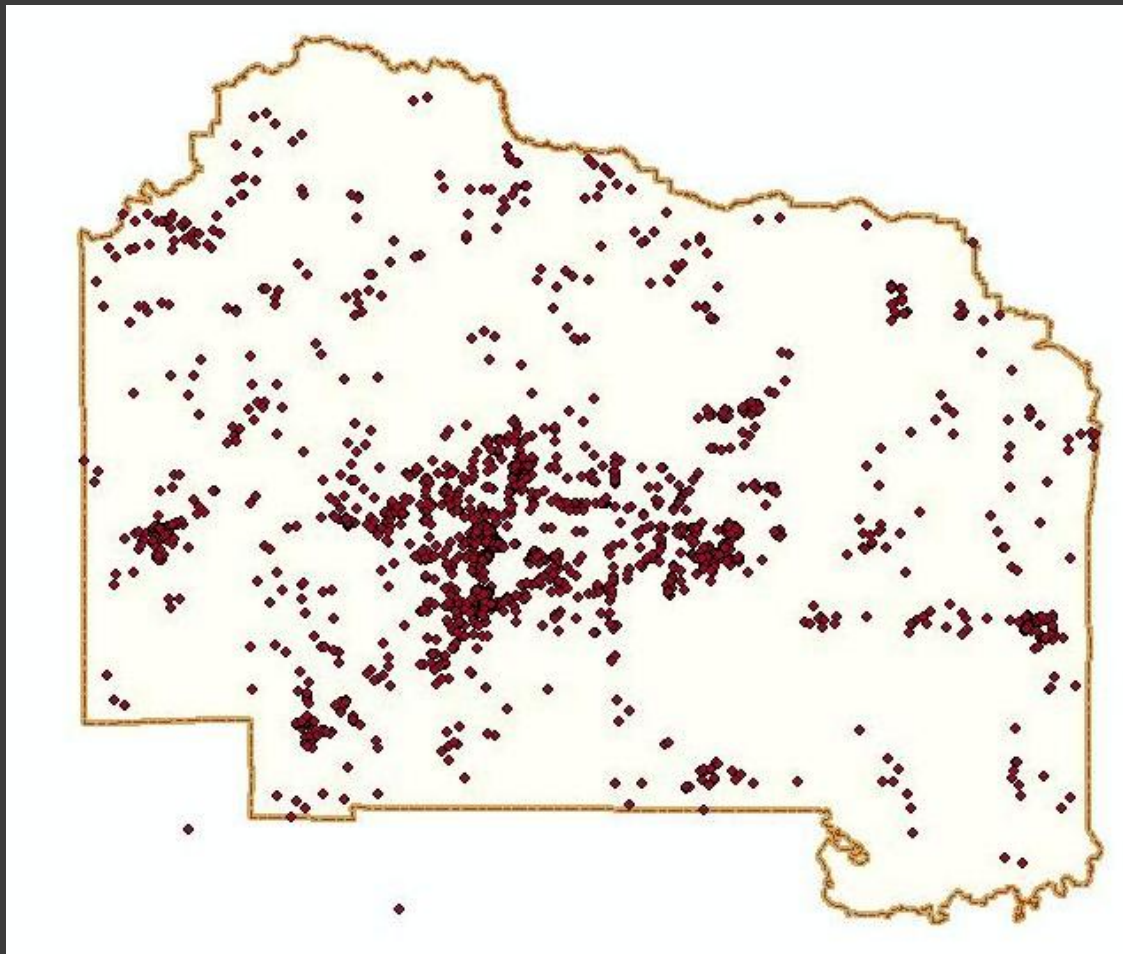
# Alachua County

- ◎ 969.12 square miles
  - 874.25 square miles of land
  - 94.94 square miles of water
- ◎ Alachua Conservation Trust
  - over 65 square miles
- ◎ Estimated Population: 243,574 people
- ◎ 249.4 people per square mile

# Objectives and Criteria

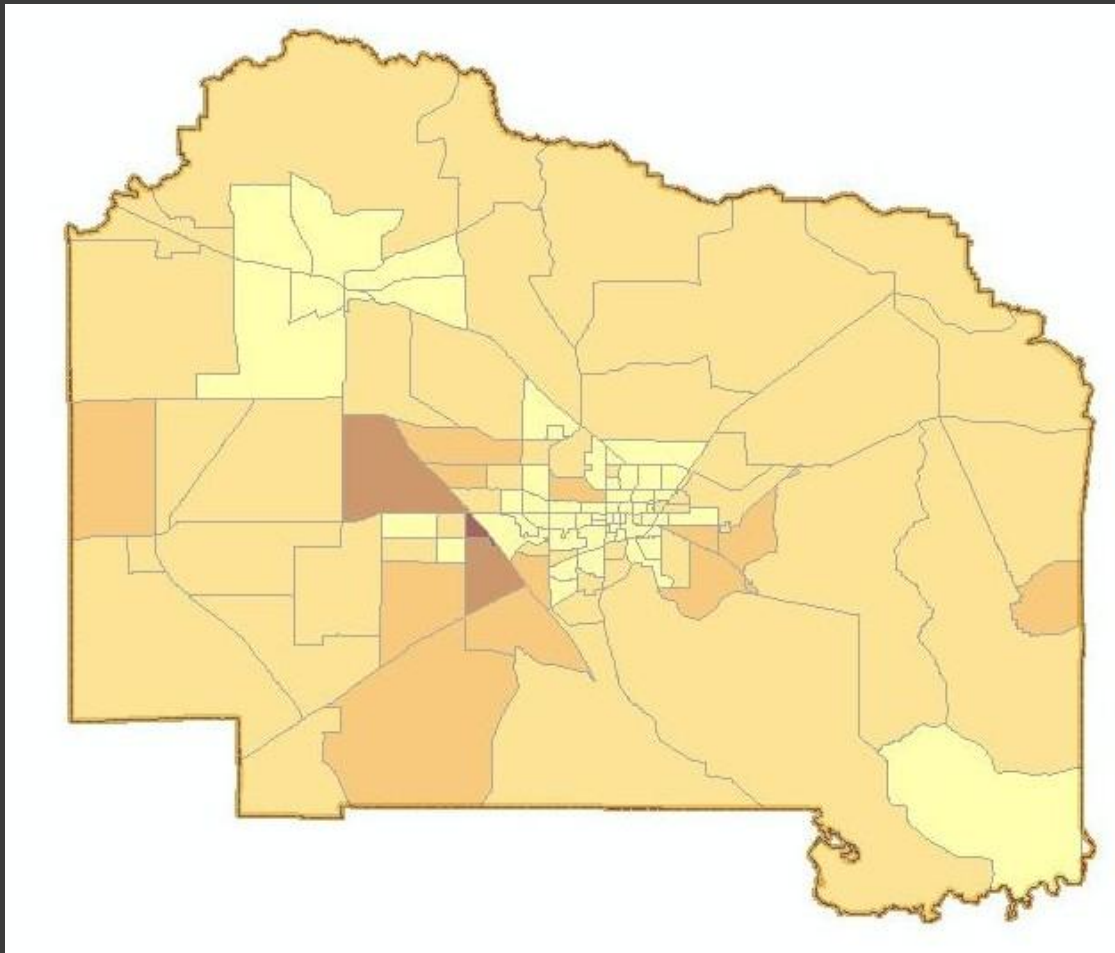
- ① Target areas where there is a high density of child neglect and abuse, homeless children, and domestic violence
- ① Focus on areas with the most incidents of crime
- ① Make community centers easily accessible to citizens with limited modes of transportation
- ① Focus on areas close to grade schools to provide easy access for children
- ① Provide services to all ages of children
- ① Provide services to the homeless while still catering to the needs of victims of all levels of income
- ① Build community centers in areas where there is limited availability of services these centers will provide

Merge of Child Neglect and Abuse, Domestic Violence,  
and Homeless Children (Current Location)  
AKA “Big Merge”

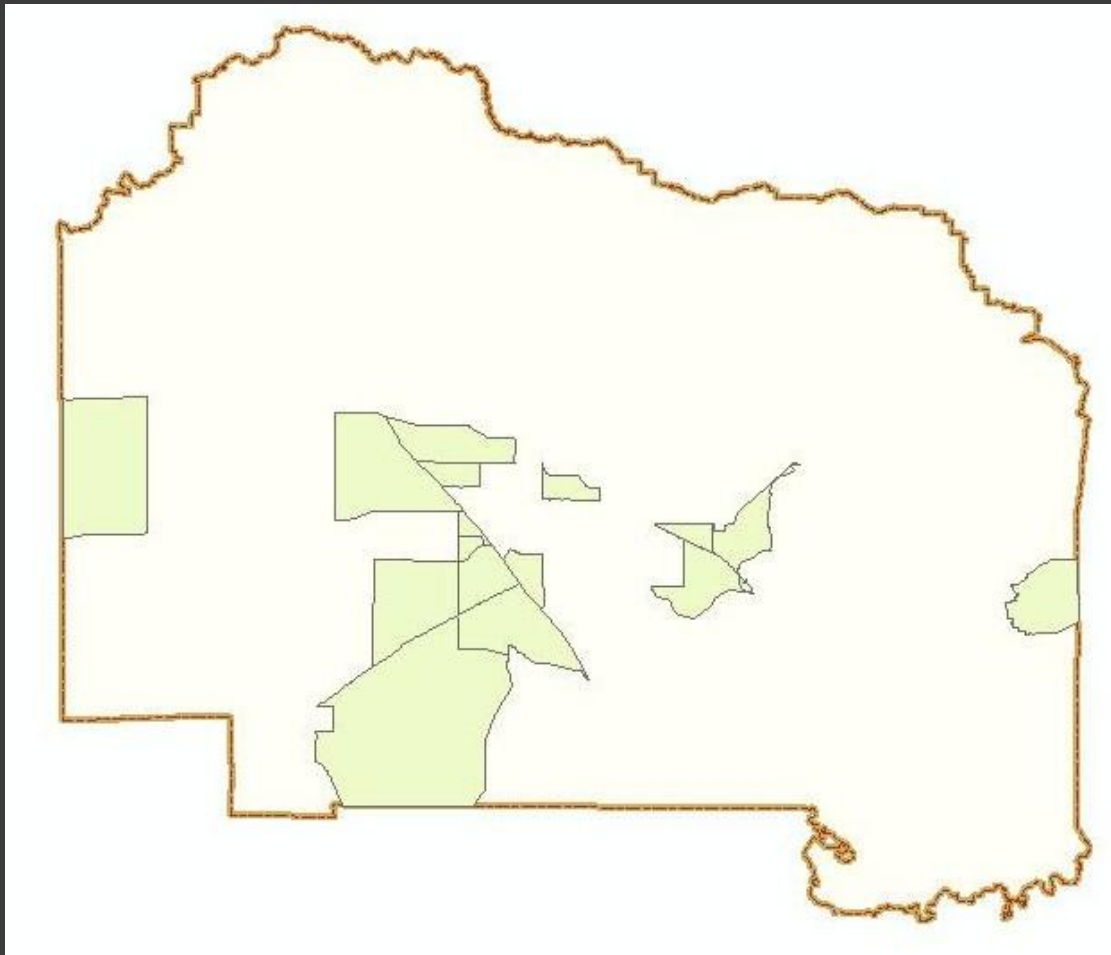




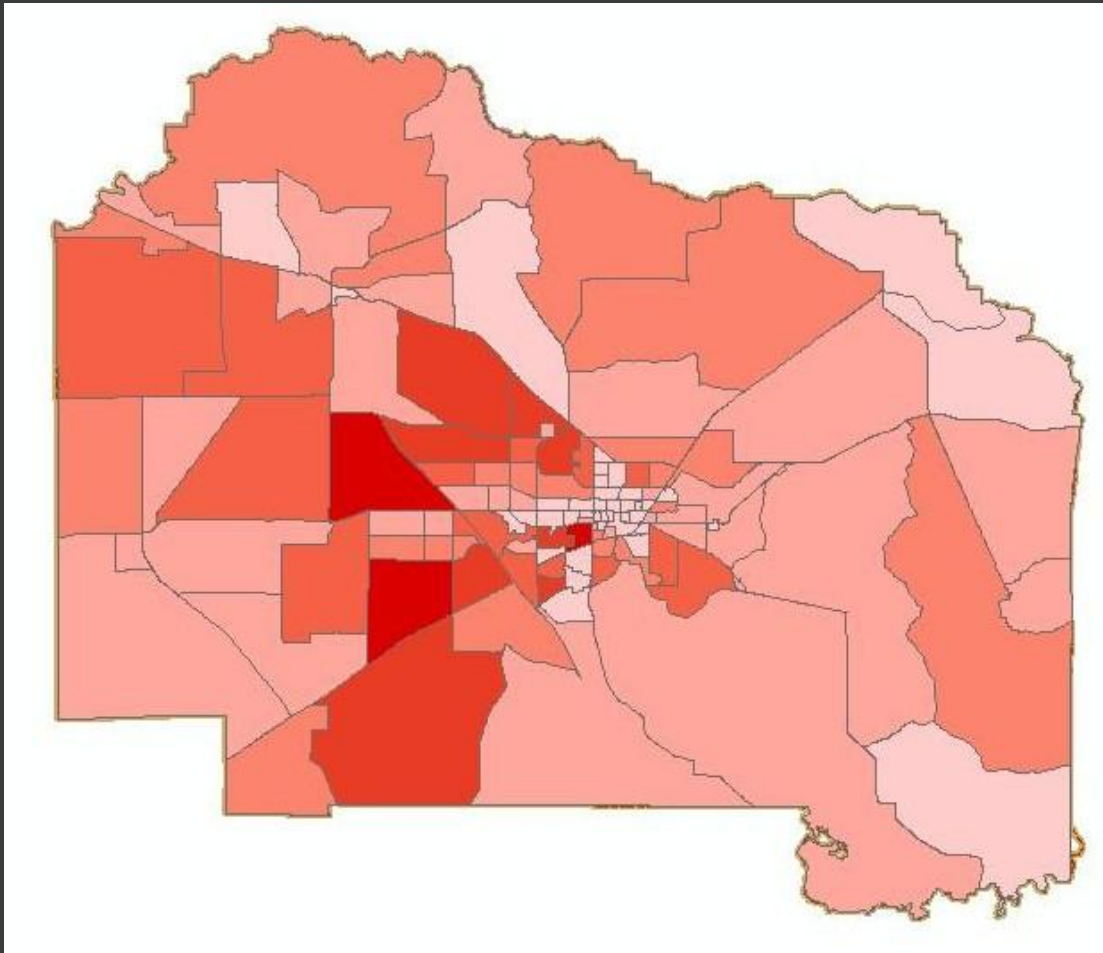
# “Big Merge” by Blockgroup After Joining with Crime Rates



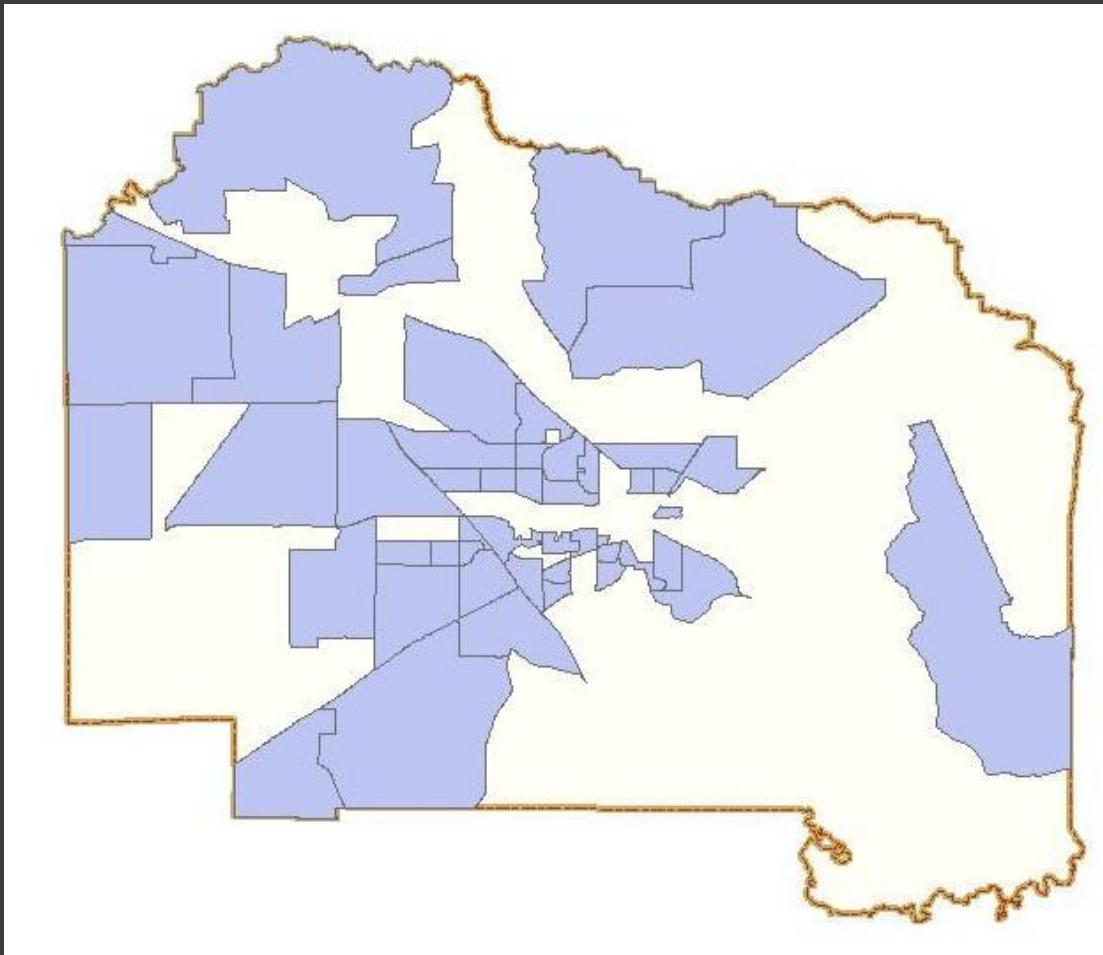
# Selection of the Top 3 Levels of Join Counts for the “Big Merge” by Blockgroup

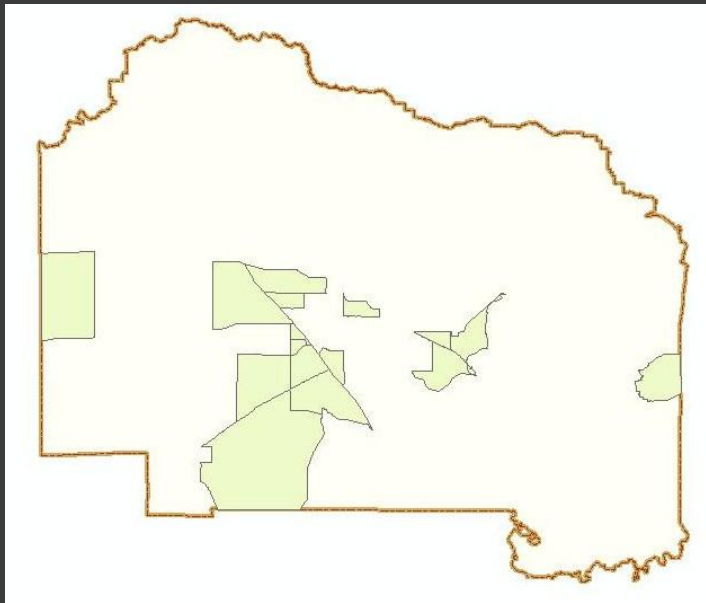


# Total Children 0-19 by Blockgroup



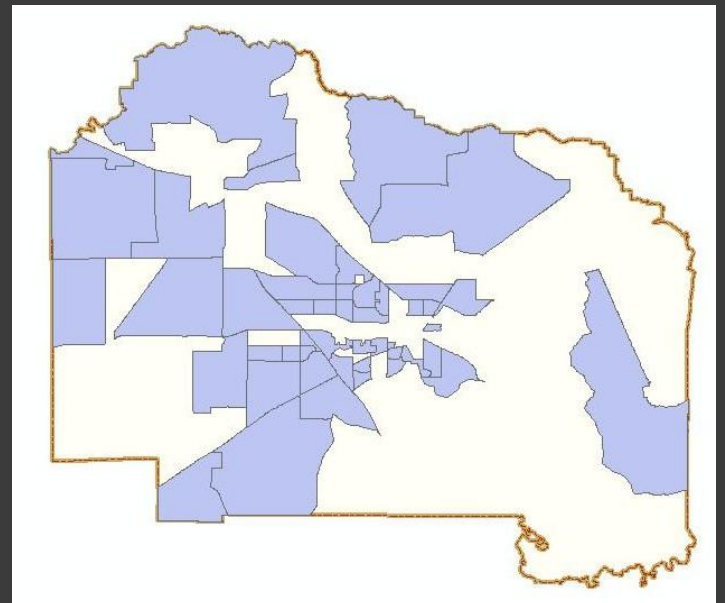
# Selection of Top 4 Levels of Blocks for Children by Blockgroup





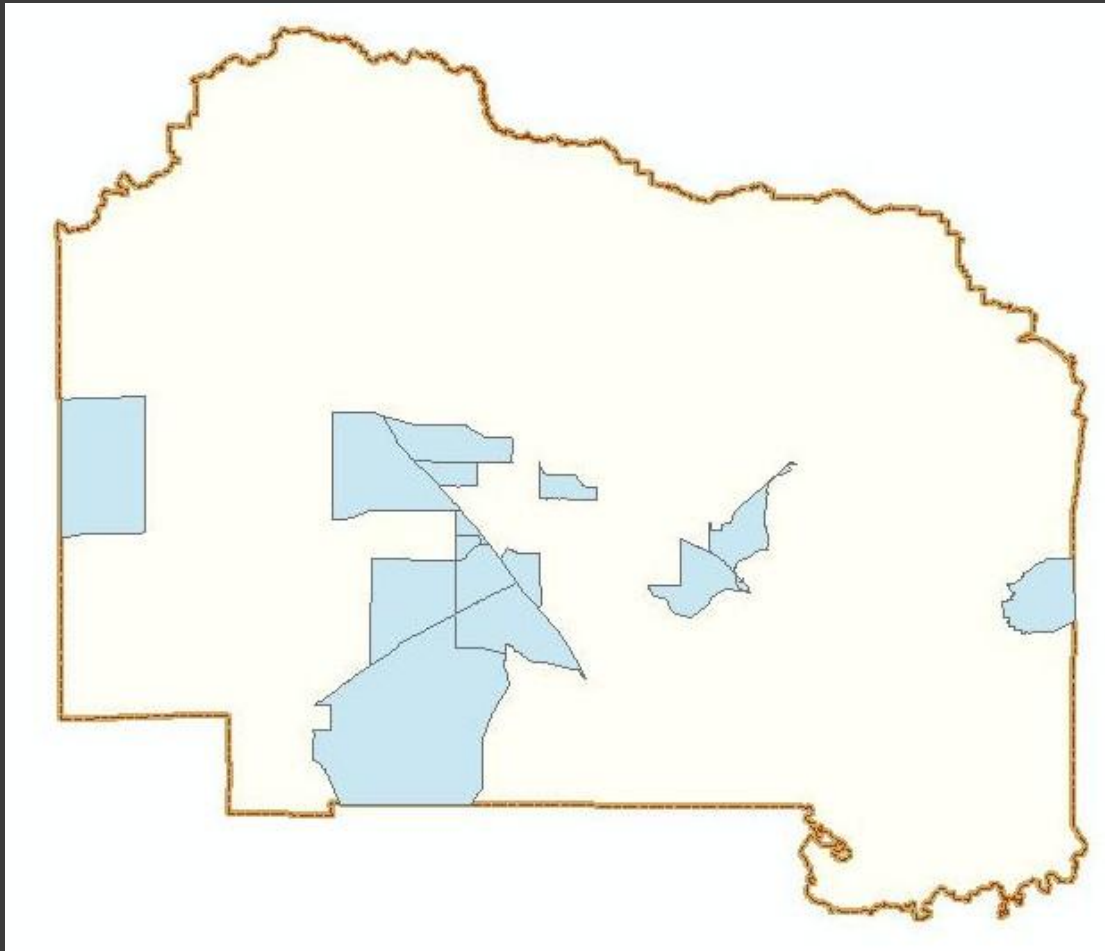
Top 3

+  
(intersects)

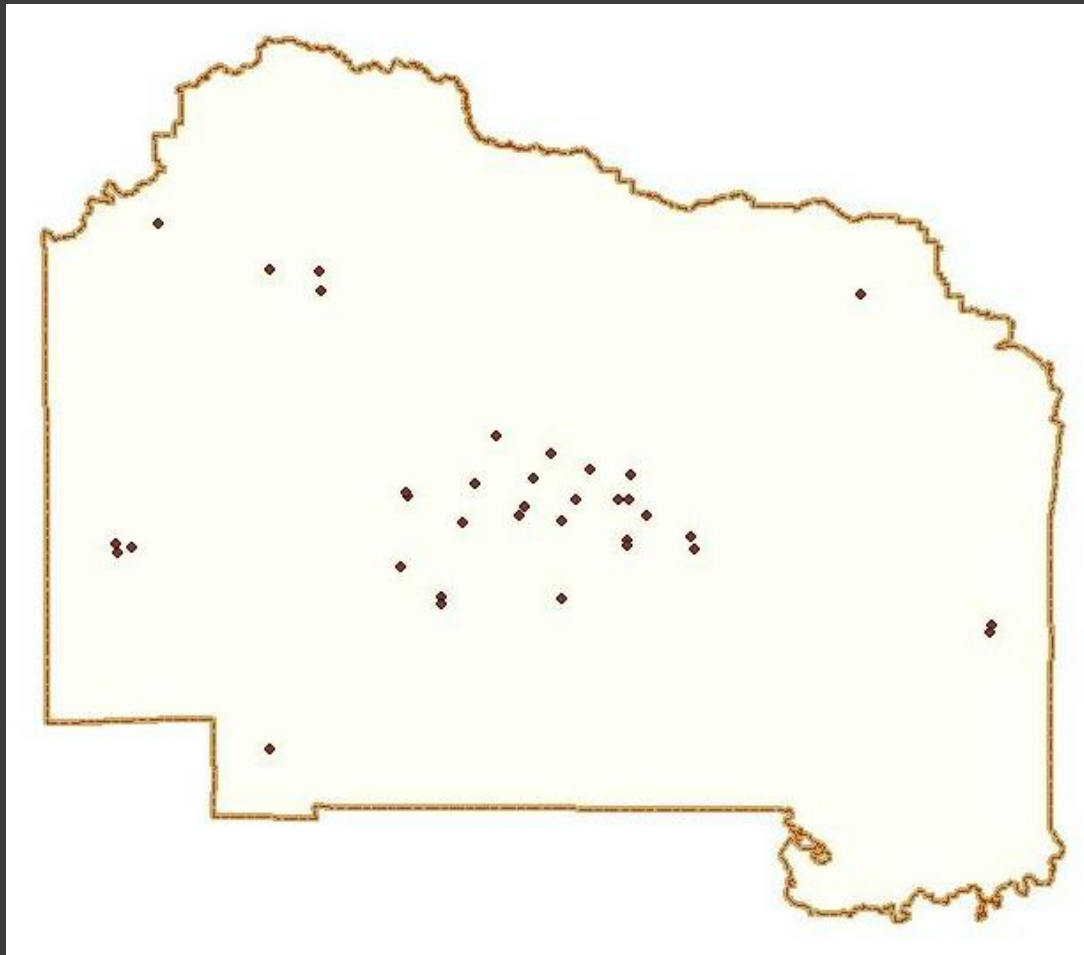


Top 4

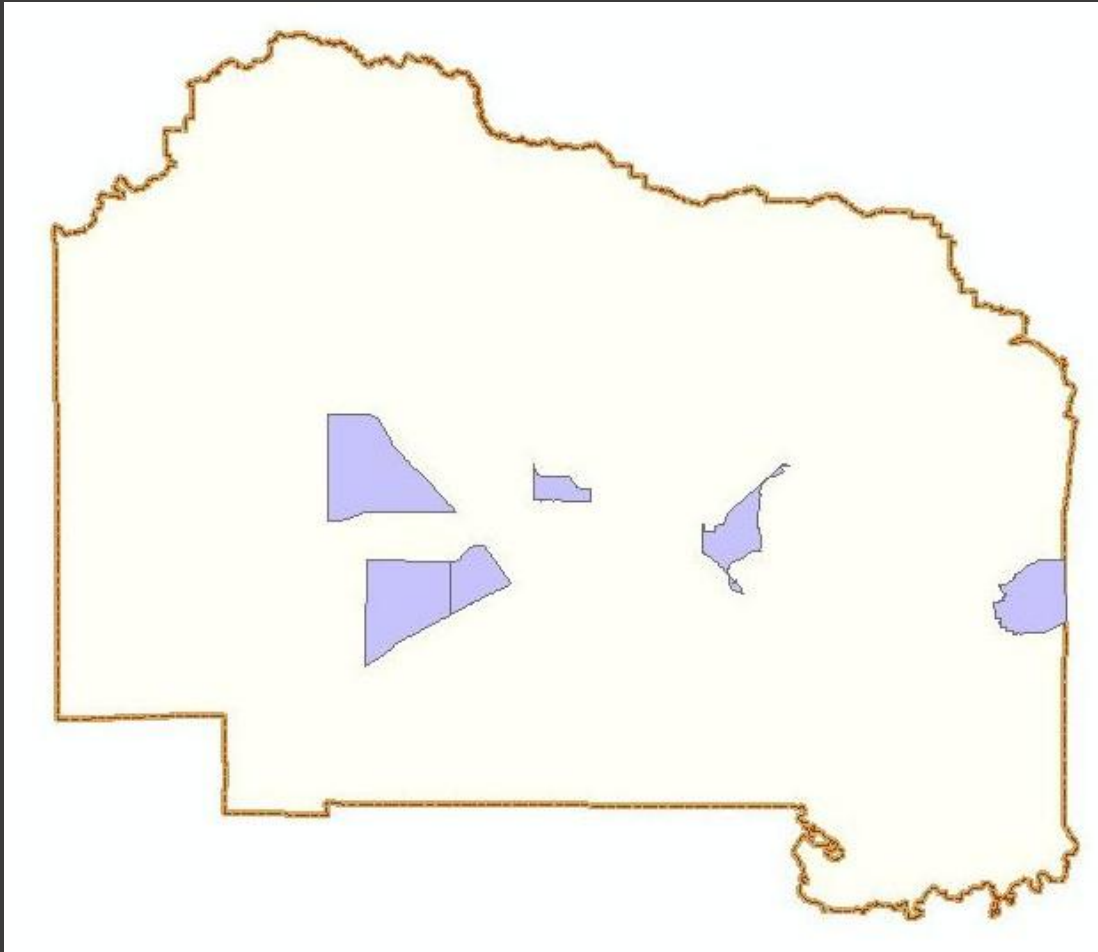
# Selection of the Intersecting Top 3 and Top 4 Groups



# All Schools (Elementary, Middle, High)

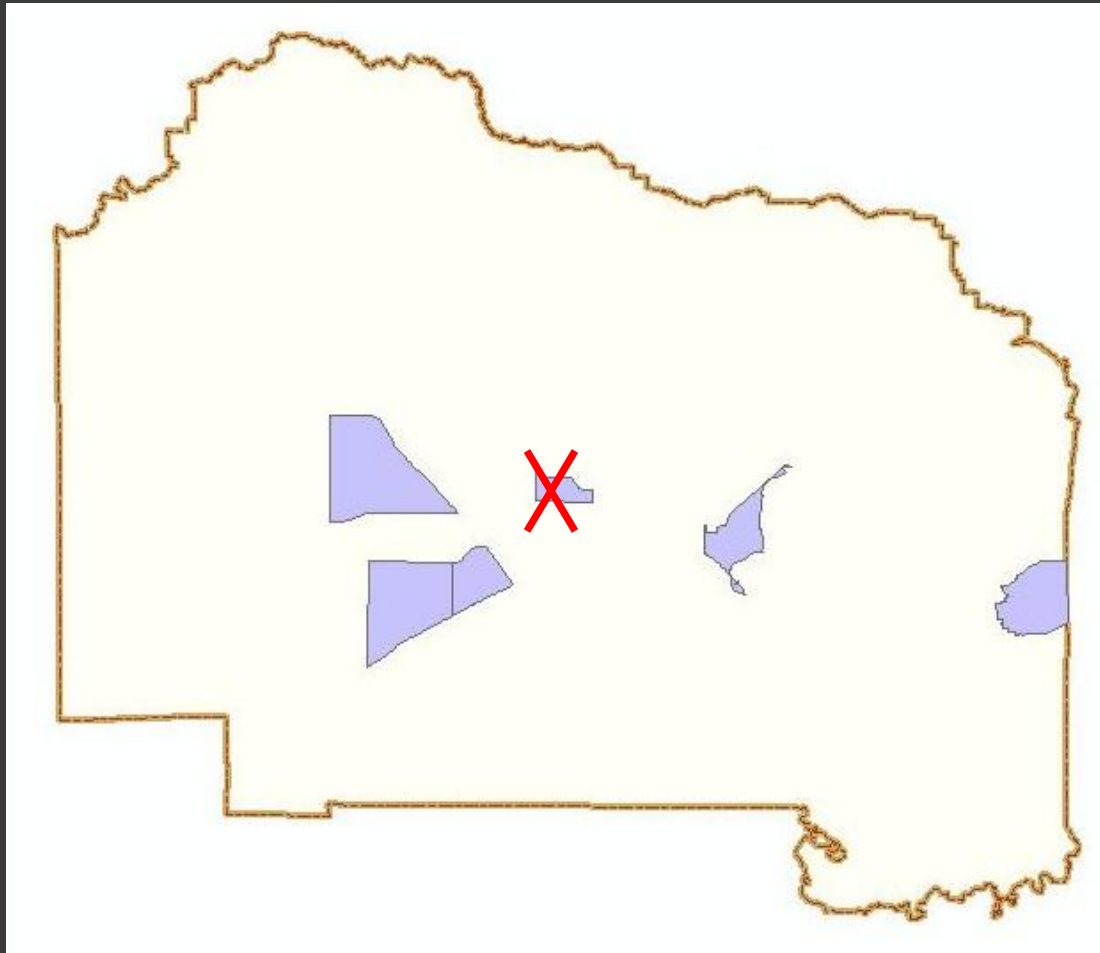


# Blocks that Contain Schools





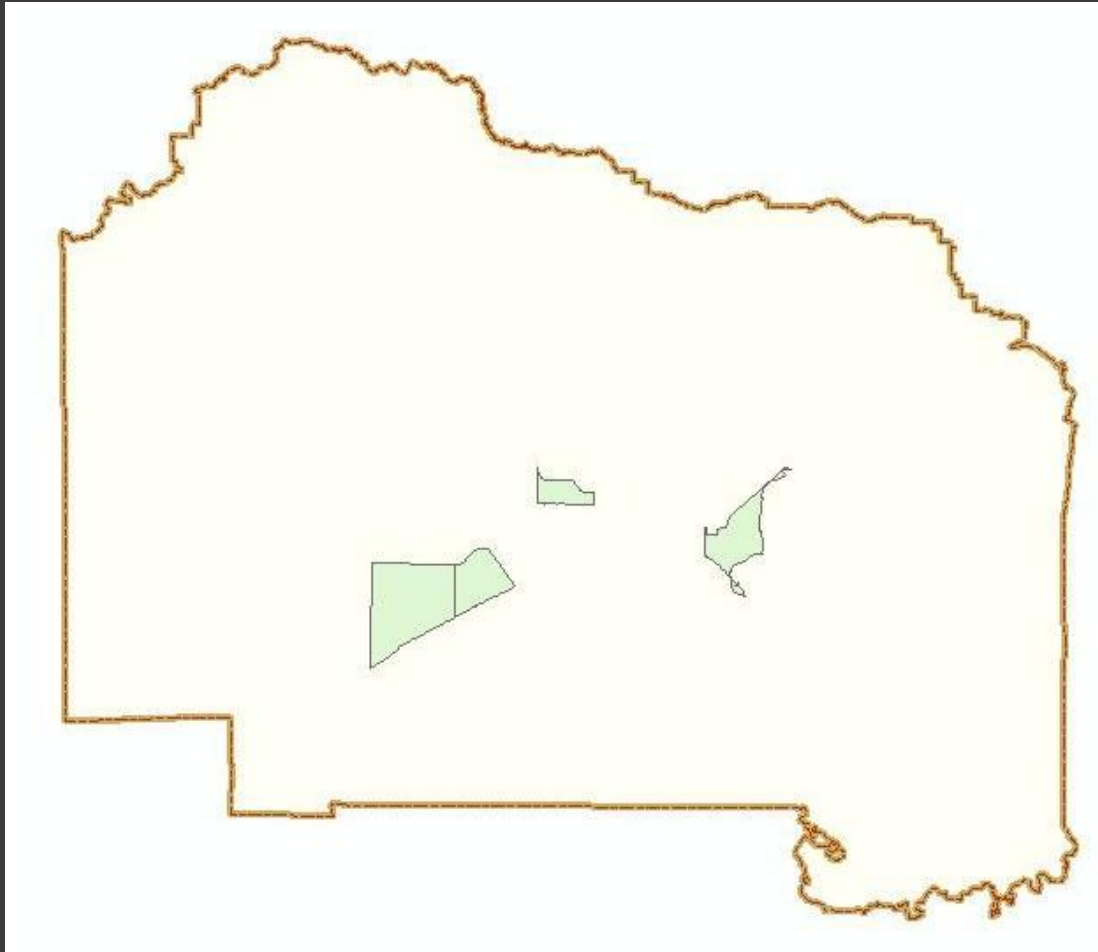
# Blocks that Contain Schools



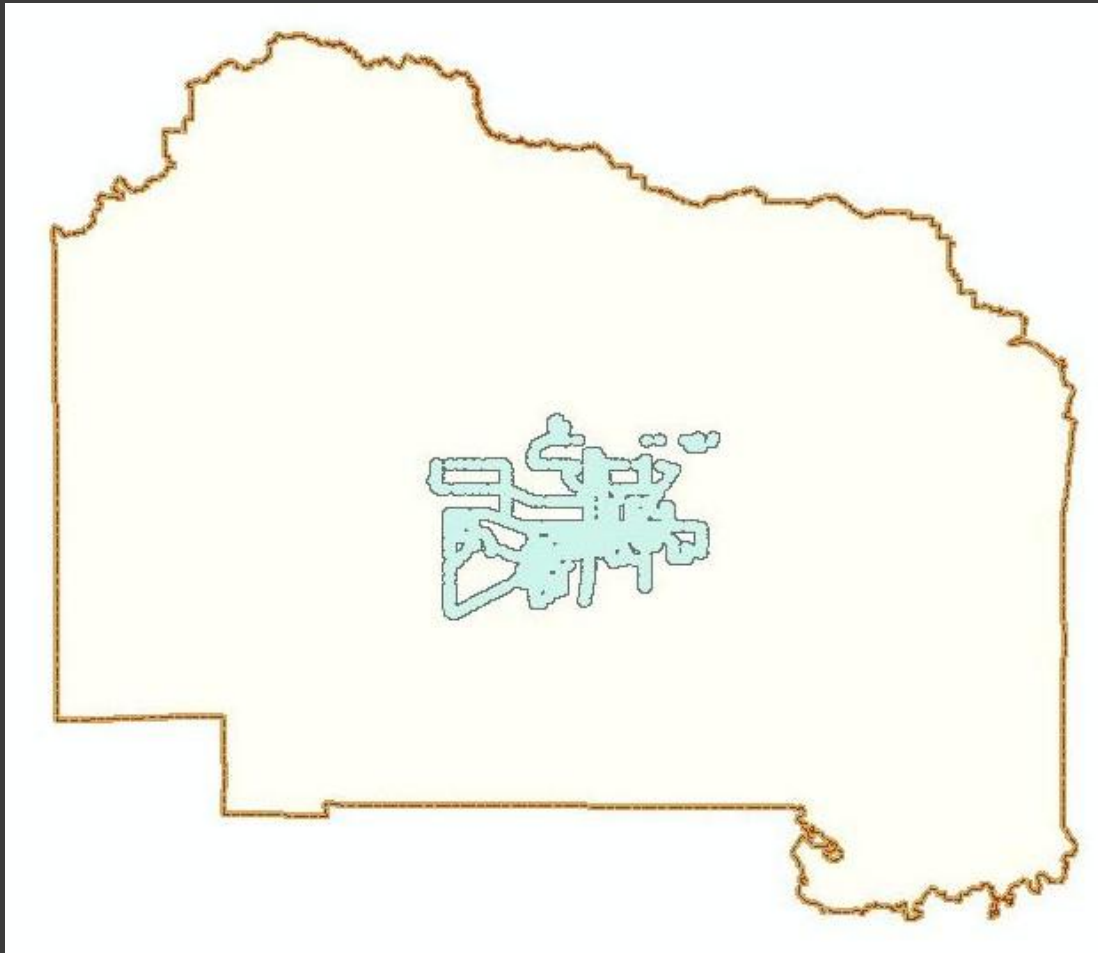
# Top Priority: Ease of Access

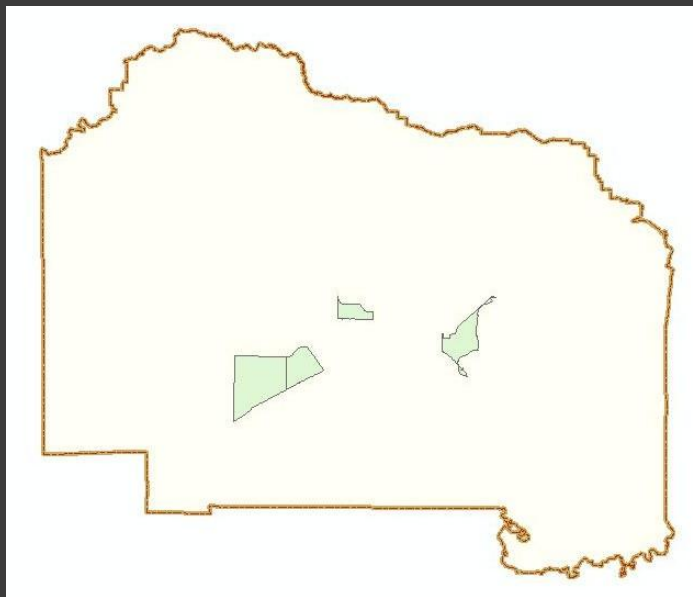
- ⦿ Focus on those without personal vehicle
- ⦿ Proximity to bus routes
  - Within .25 miles of bus stop
- ⦿ Proximity to schools
  - Within .25 miles of schools

# Blocks that Contain Bus Stops and Schools

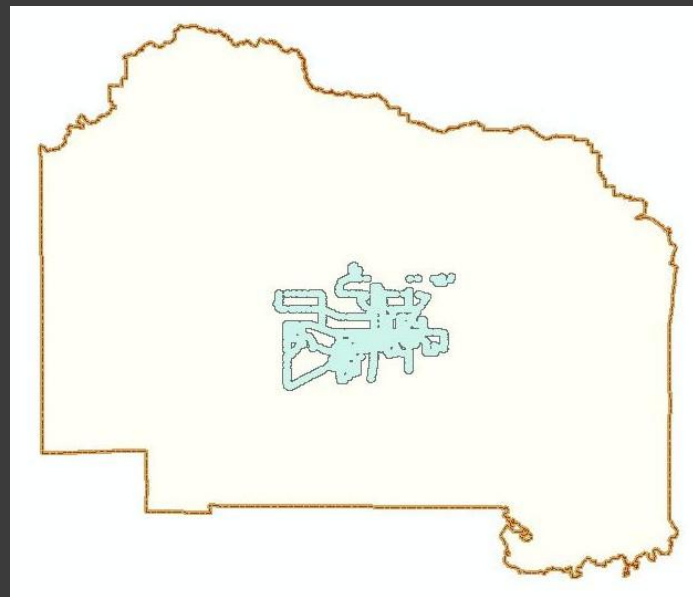


# Buffer of Bus Stops

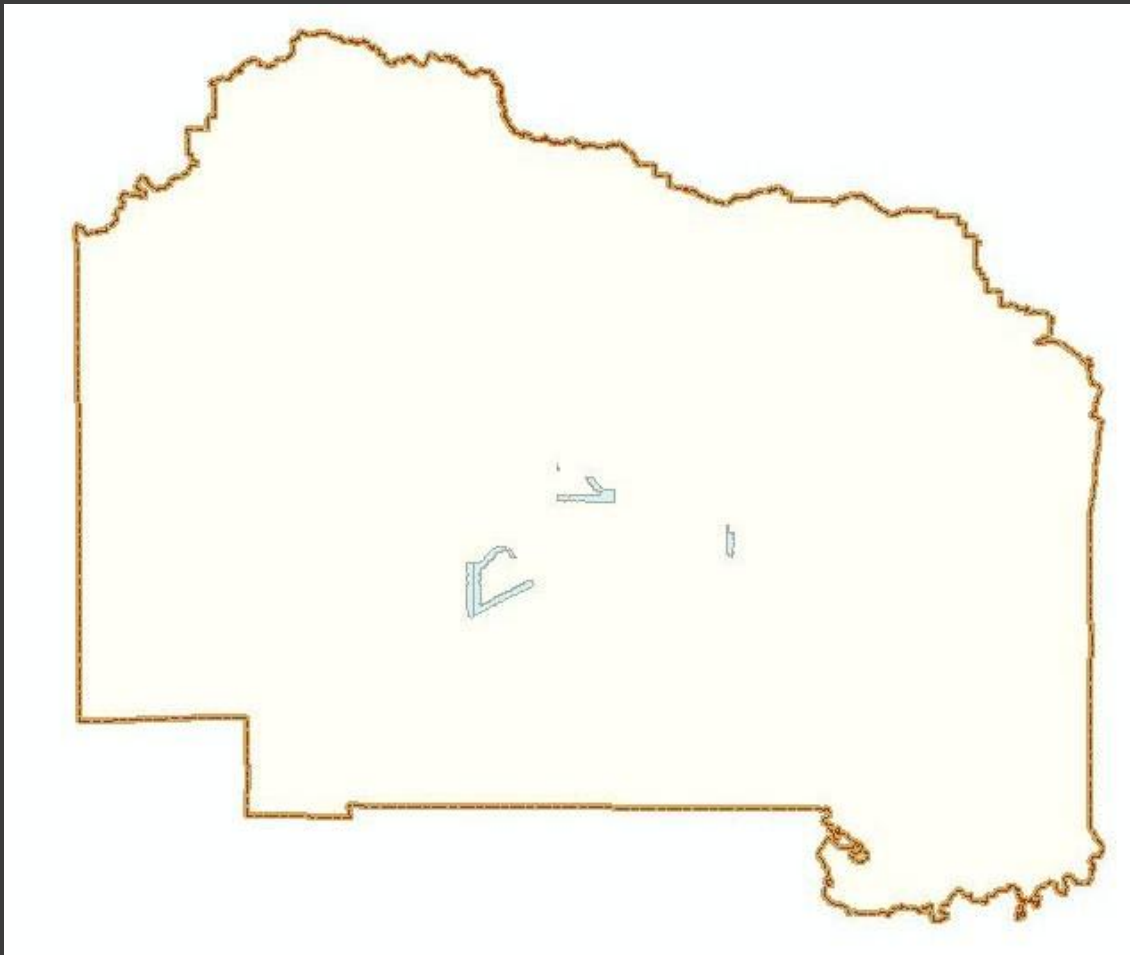




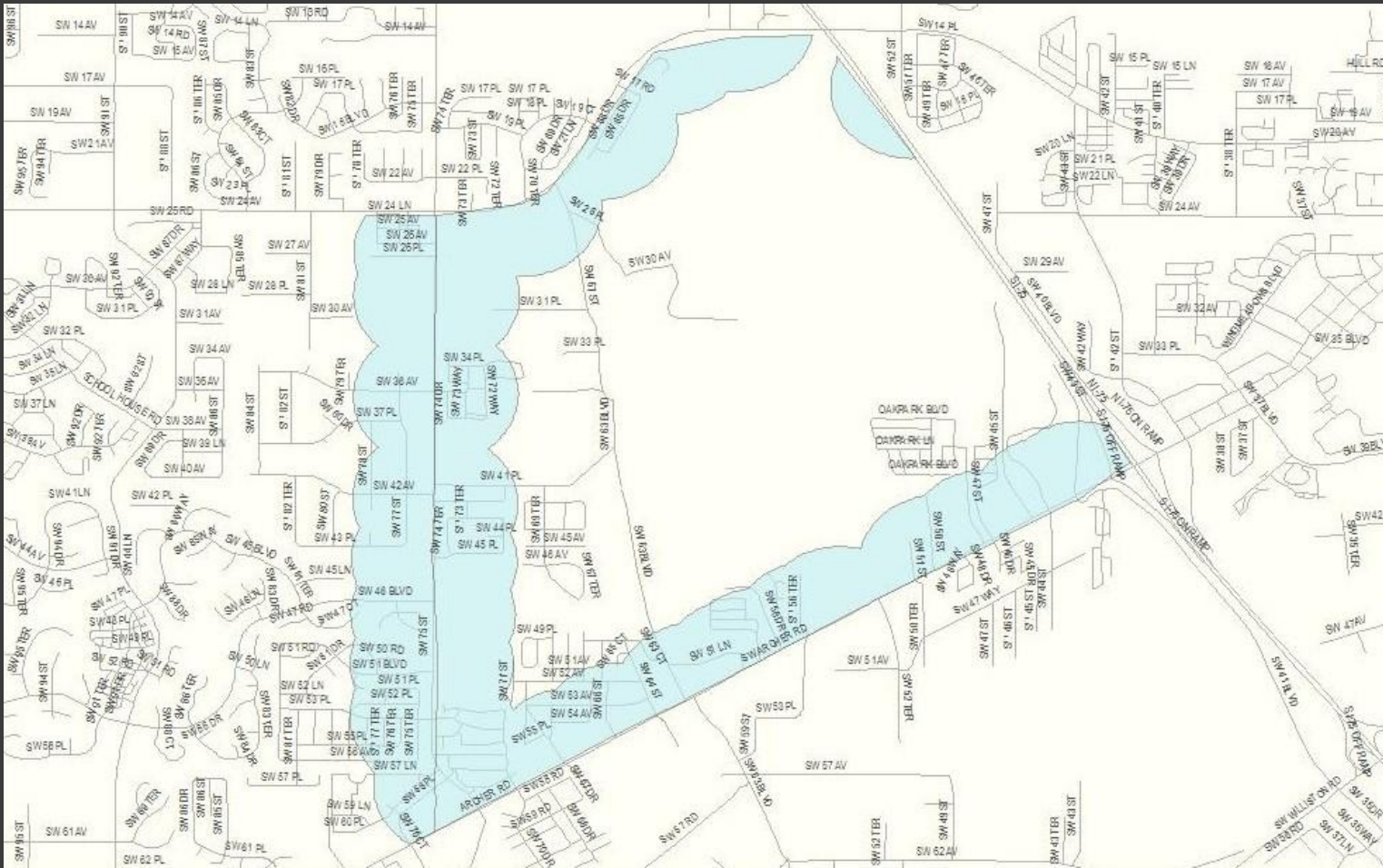
CLIP



# Clip of Blocks over Bus Stop Buffer

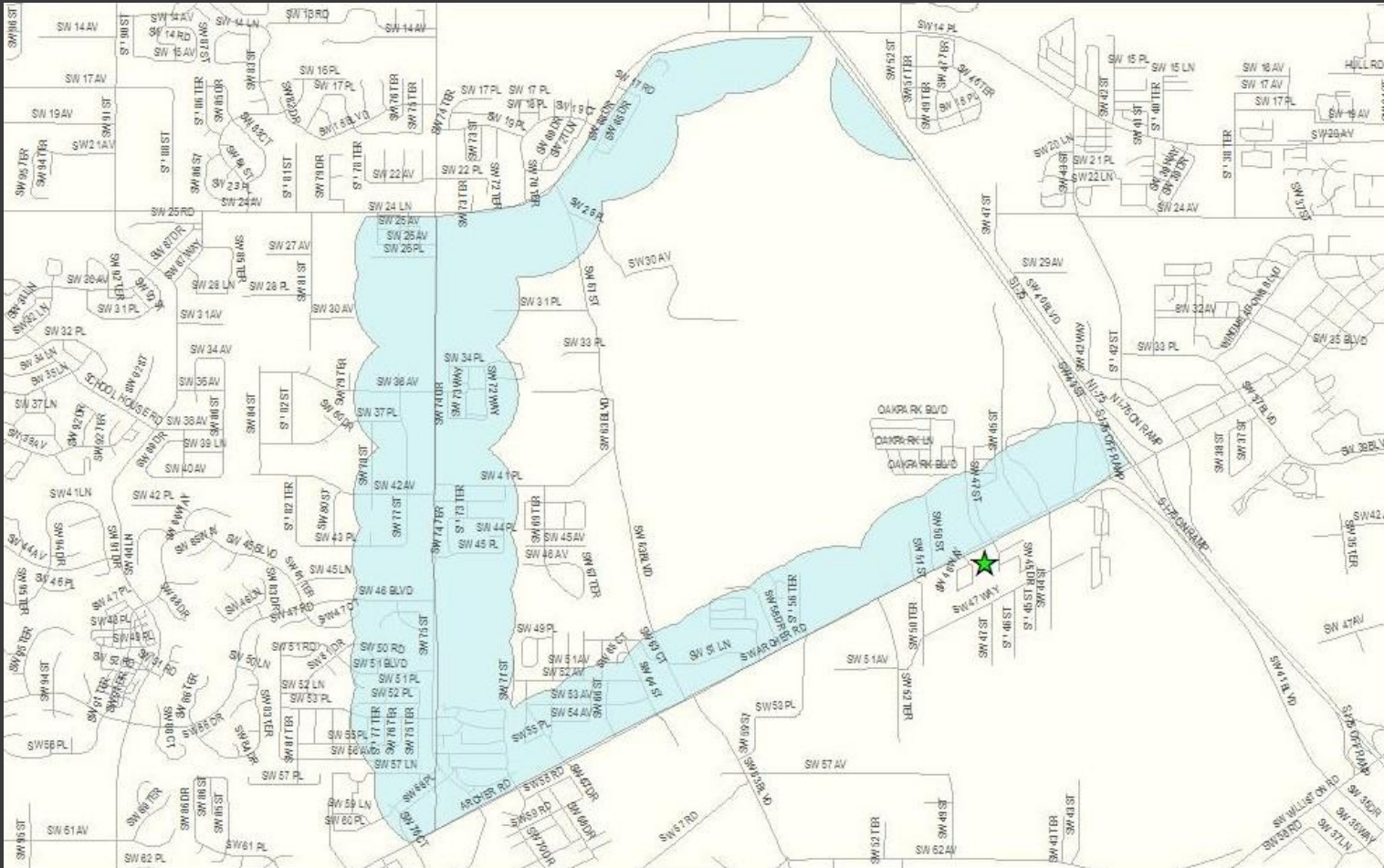


# West Gainesville Zone





# West Gainesville Site





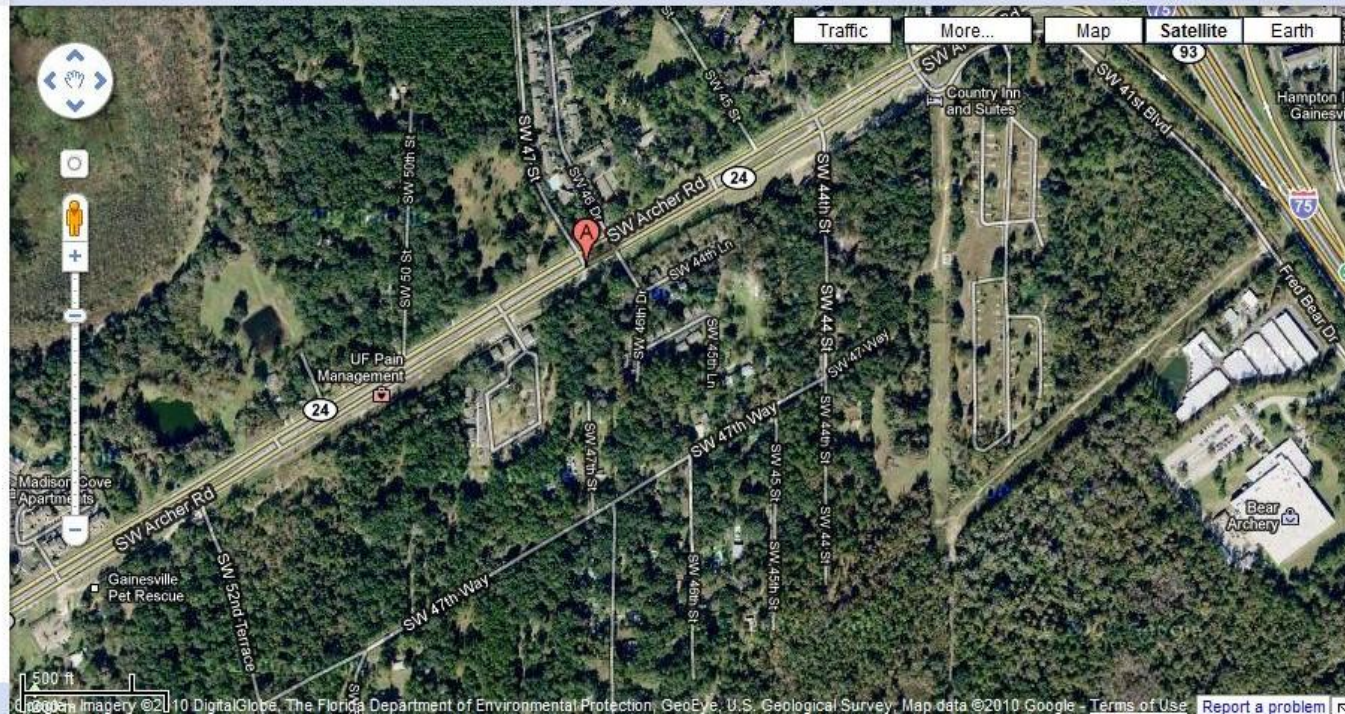
# Site #1: West Gainesville

- Near Zone 1: Polygon of 23rd Avenue, Tower Road, Archer Road and I-75
- Specific Site: 4281 SW Archer Road
- Avoided conservation areas related to Kanapaha Botanical Gardens
- 0.04 miles of bus stop
- Public schools include Kanapaha Middle School and Wiles Elementary School

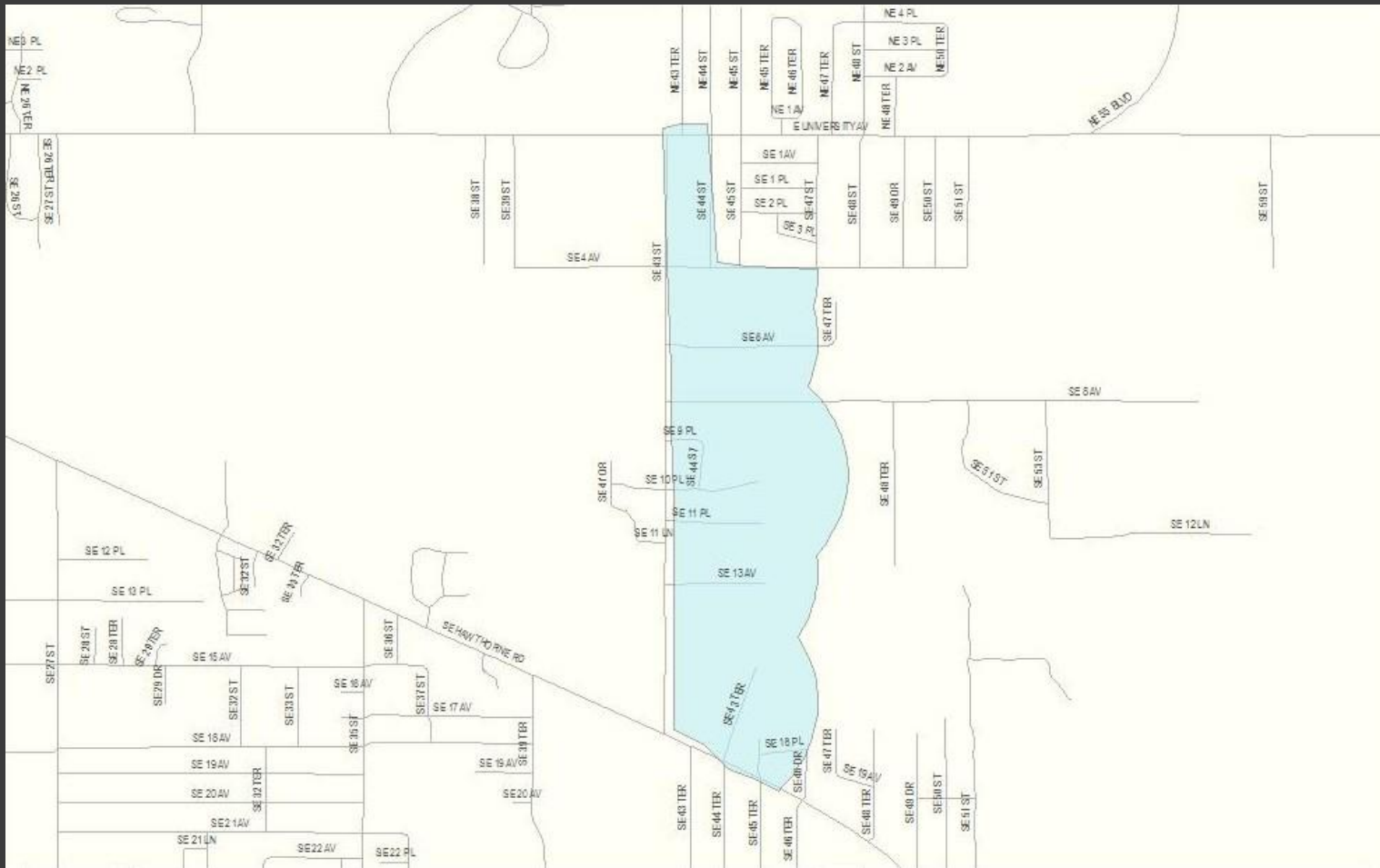
[Get Directions](#) [My Maps](#)

[Print](#) [Send](#) [Link](#)

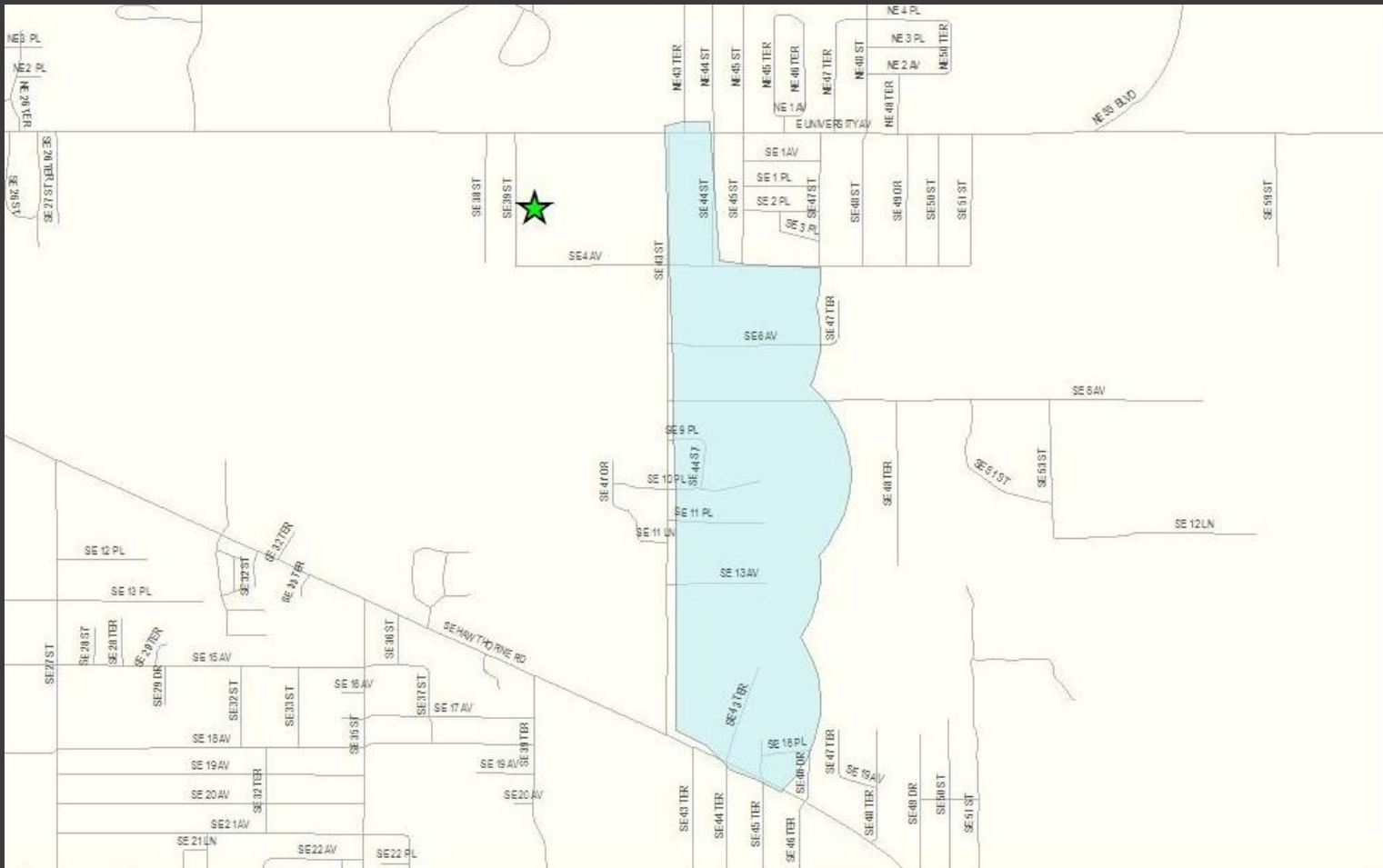
**4281 SW Archer Rd**  
Gainesville, FL 32608  
[Directions](#) [Search nearby](#) [more](#)



# East Gainesville Zone



# East Gainesville Site



# Site #2: East Gainesville

- Near Zone 2: Area of land off SE 43rd Street, between East University Avenue and SE Hawthorne Road
- Specific Site: 4001 East University Avenue
- 0.06 miles of bus stop
- Public schools include Lake Forest Elementary School and Eastside High School



Get Directions My Maps

Print Send Link

**4001 E University Ave**  
Gainesville, FL 32641  
[Directions](#) [Search nearby](#) [more](#)

Real estate at this address:

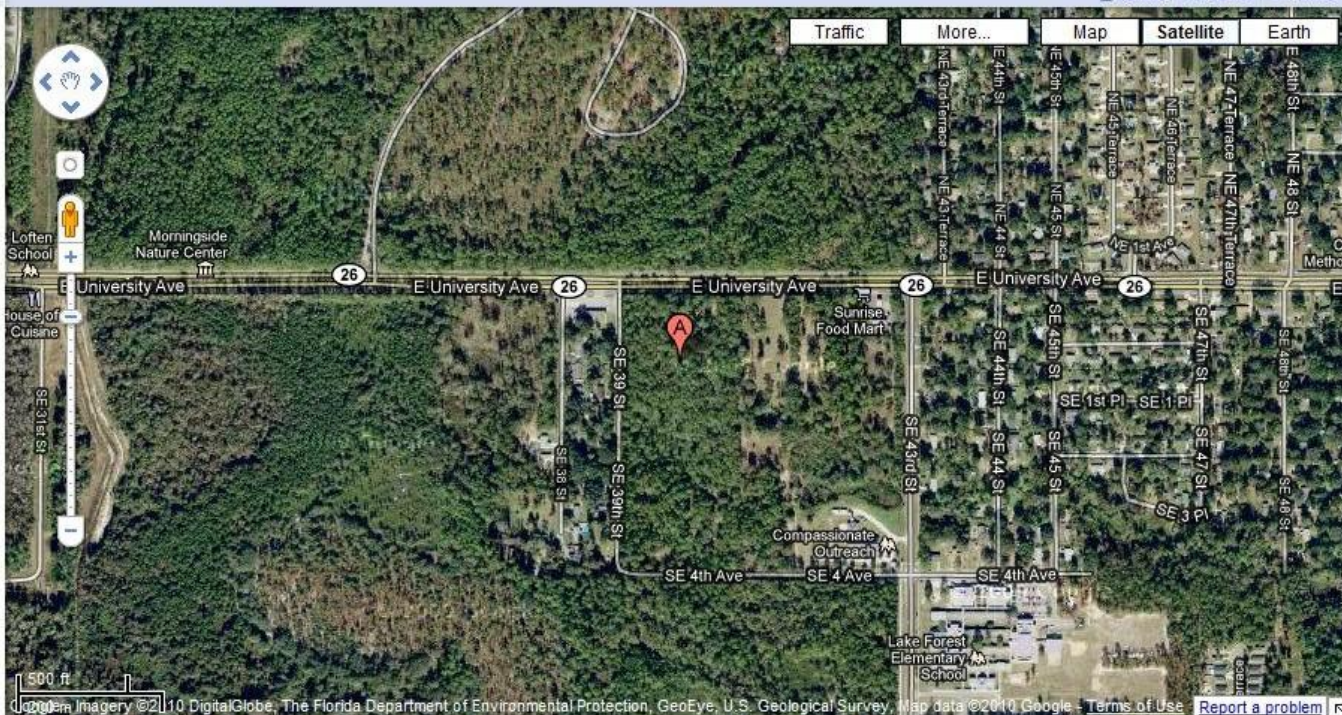
**\$199,000**

[All real estate near this address](#)

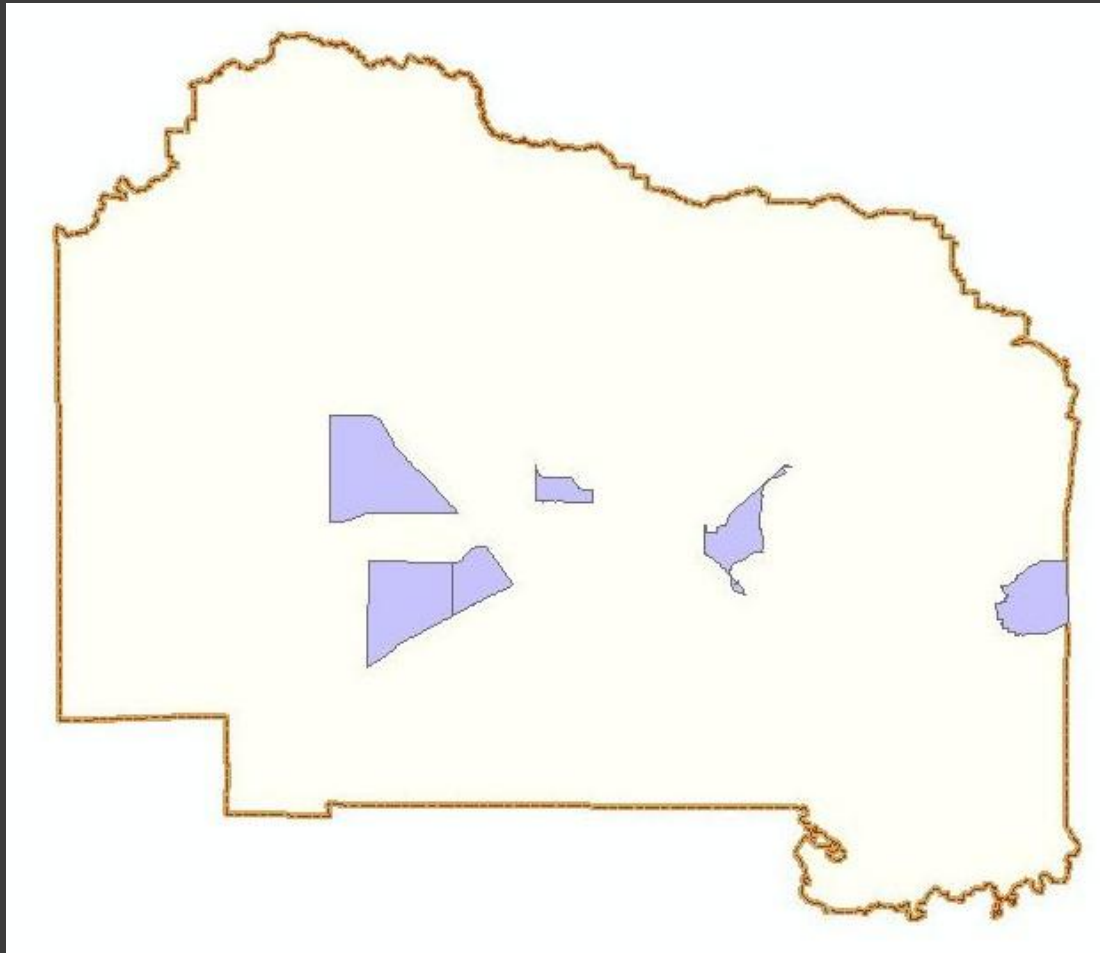
**KB Home® Houses for Sale**

Jacksonville KB Home Locations  
Homes Available for Quick Move-In!  
[KBHome.com/Jacksonville](#)  
Gainesville, FL

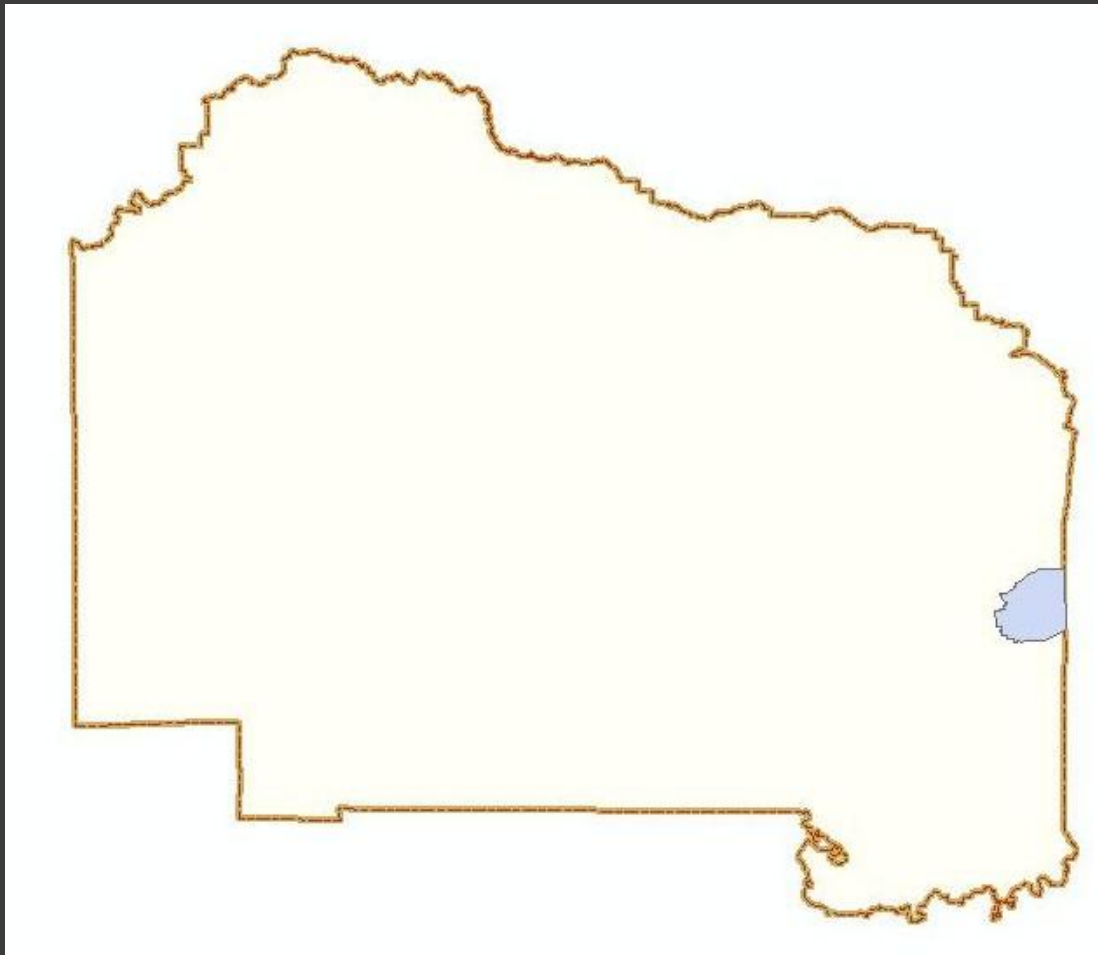
Ads



# Blocks that Contain Schools

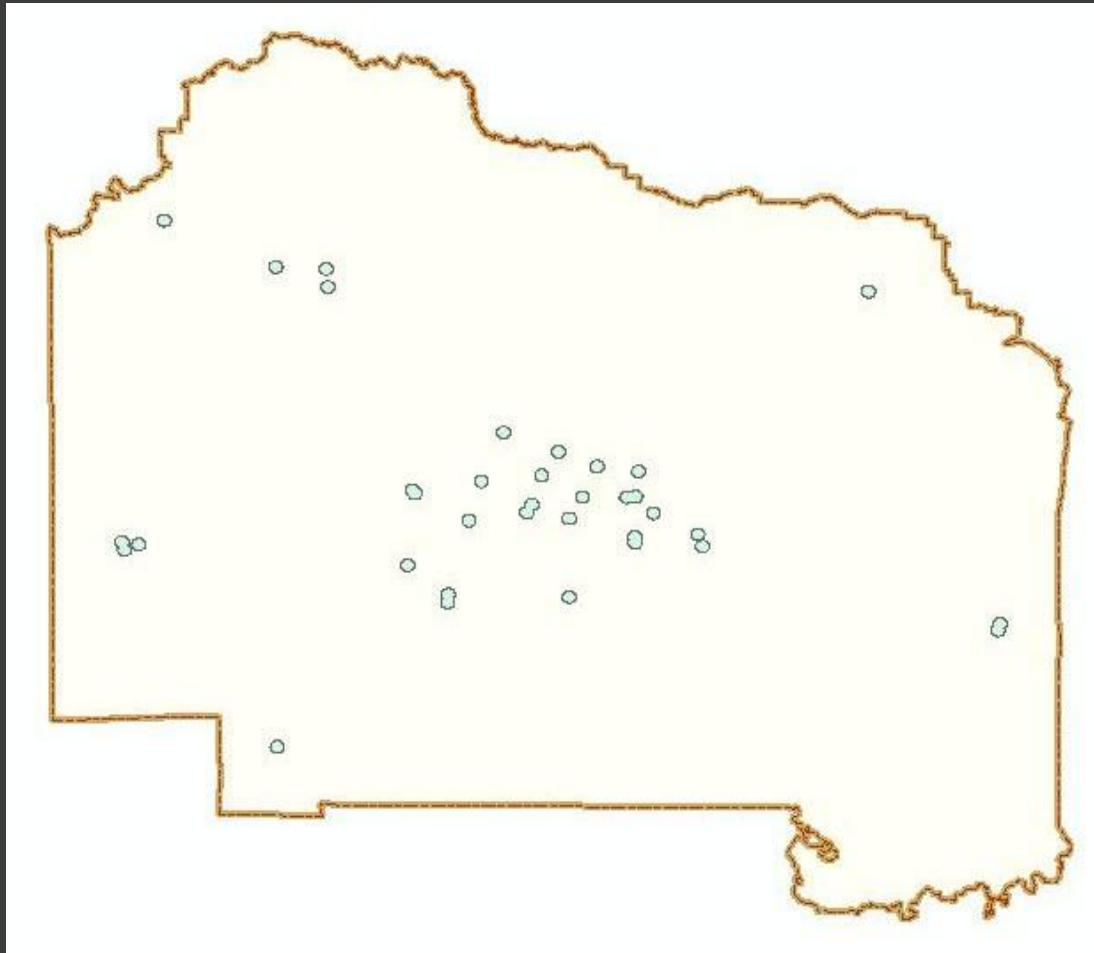


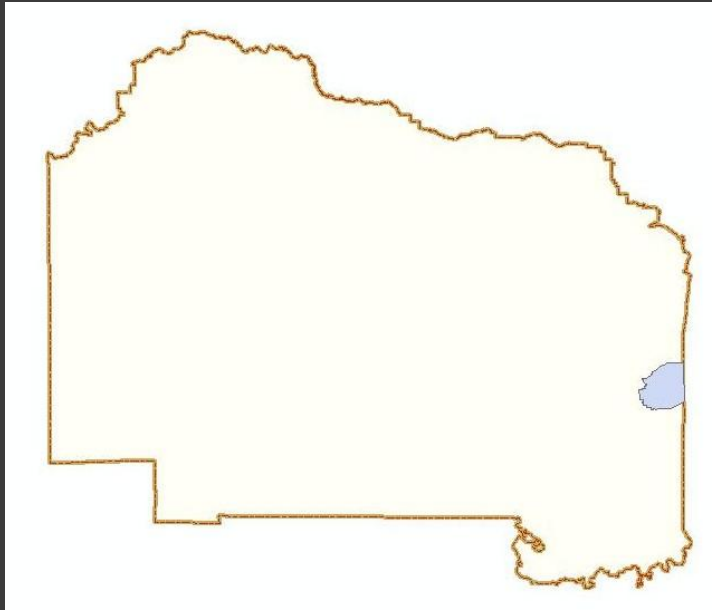
# Hawthorne Area Block



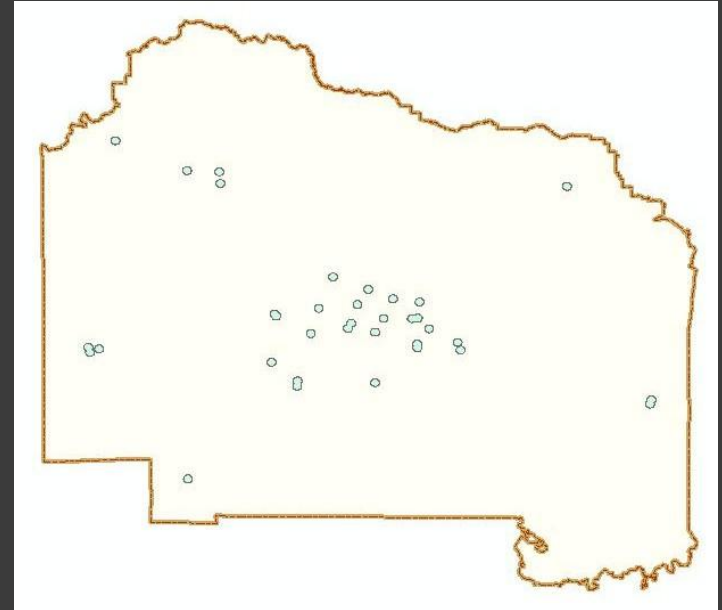


# Buffer of Schools

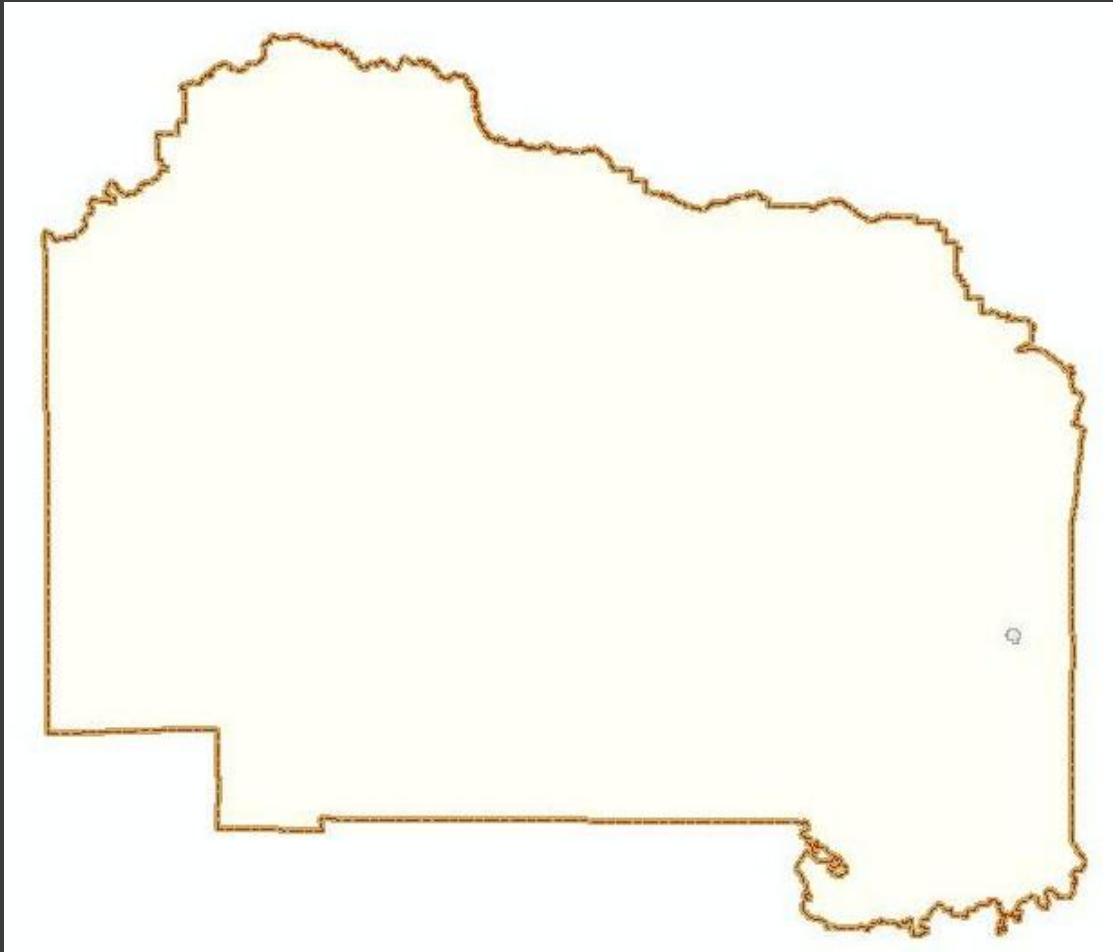




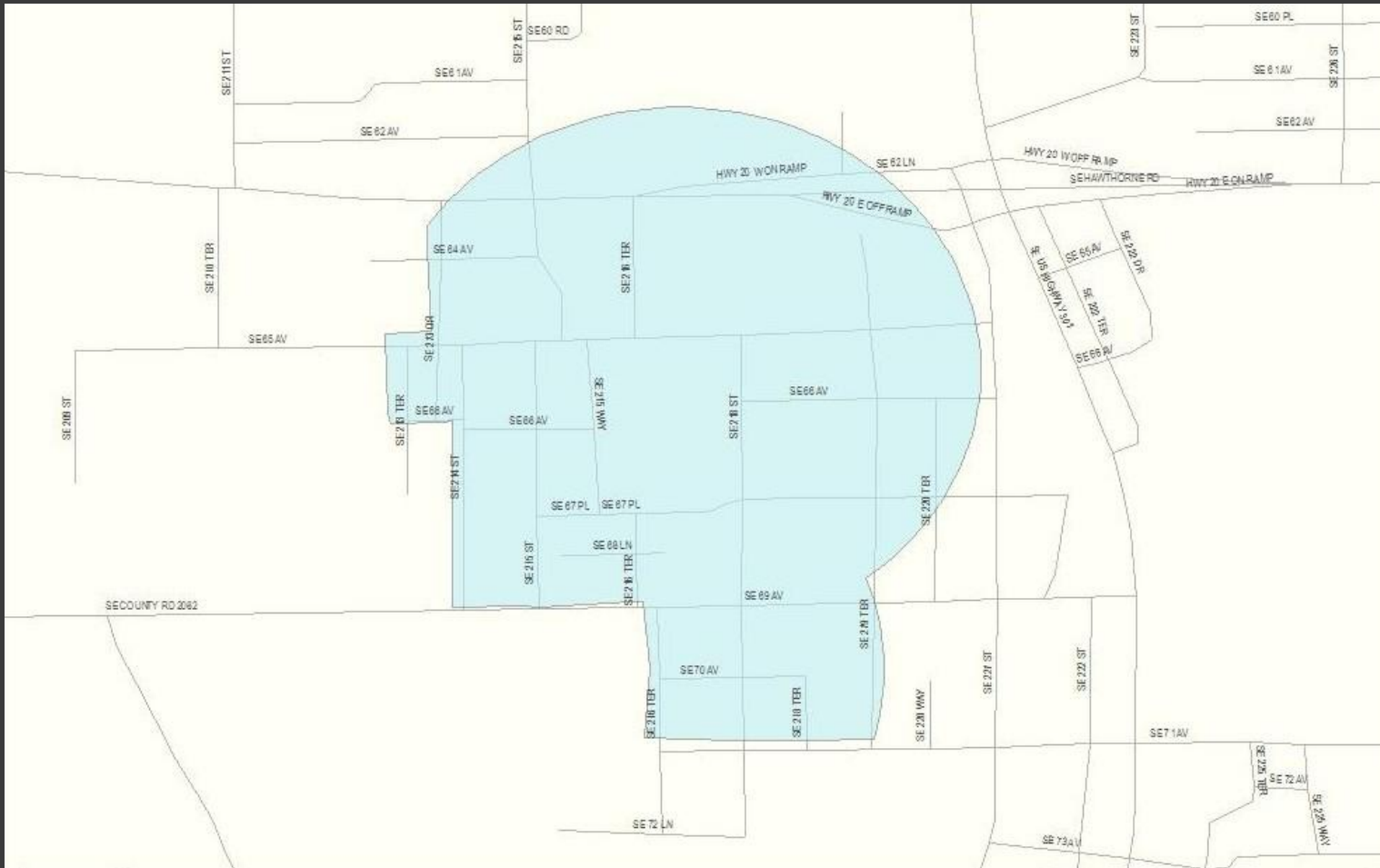
CLIP



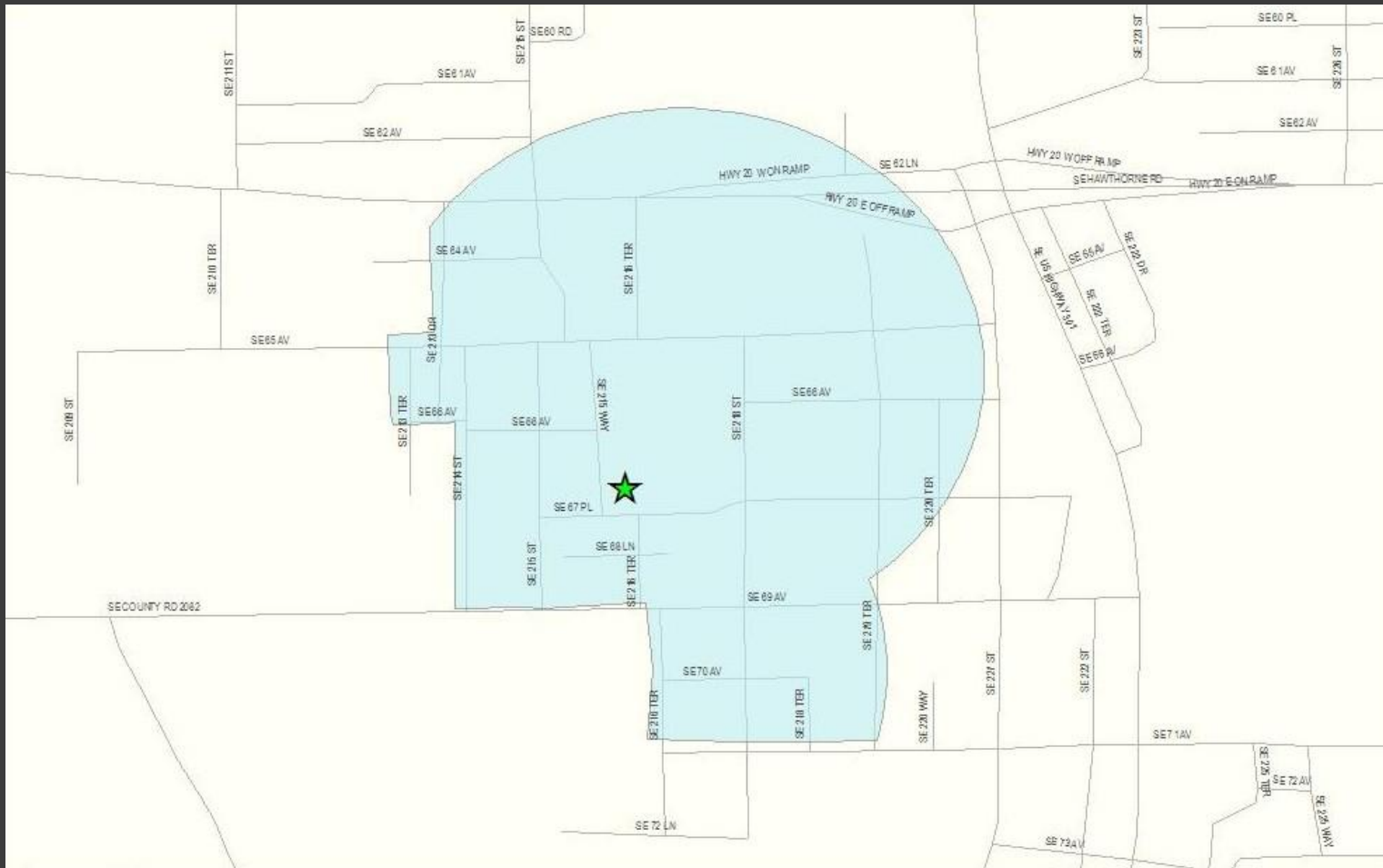
# Clip of Hawthorne Block and School Buffer



# Hawthorne Zone



# Hawthorne Site



# Site #3: Hawthorne

- Within Zone 3: SW corner of SE Hawthorne Road and US-301
- Specific Site: NW 7th Avenue
- Not within any public transportation route
- Public schools include Shell Elementary and Hawthorne Middle/High School



Get Directions My Maps

Print Send Link

**Hawthorn Suites by Wyndham** Ads

Enjoy Free Breakfast and Internet.  
Book now at **Hawthorn Suites!**  
[www.Hawthorn.com](http://www.Hawthorn.com)

**NW 7th Ave**

Hawthorne, FL 32640

[Directions](#) [Search nearby](#) [more](#)

[Explore this area](#)

**Photos**

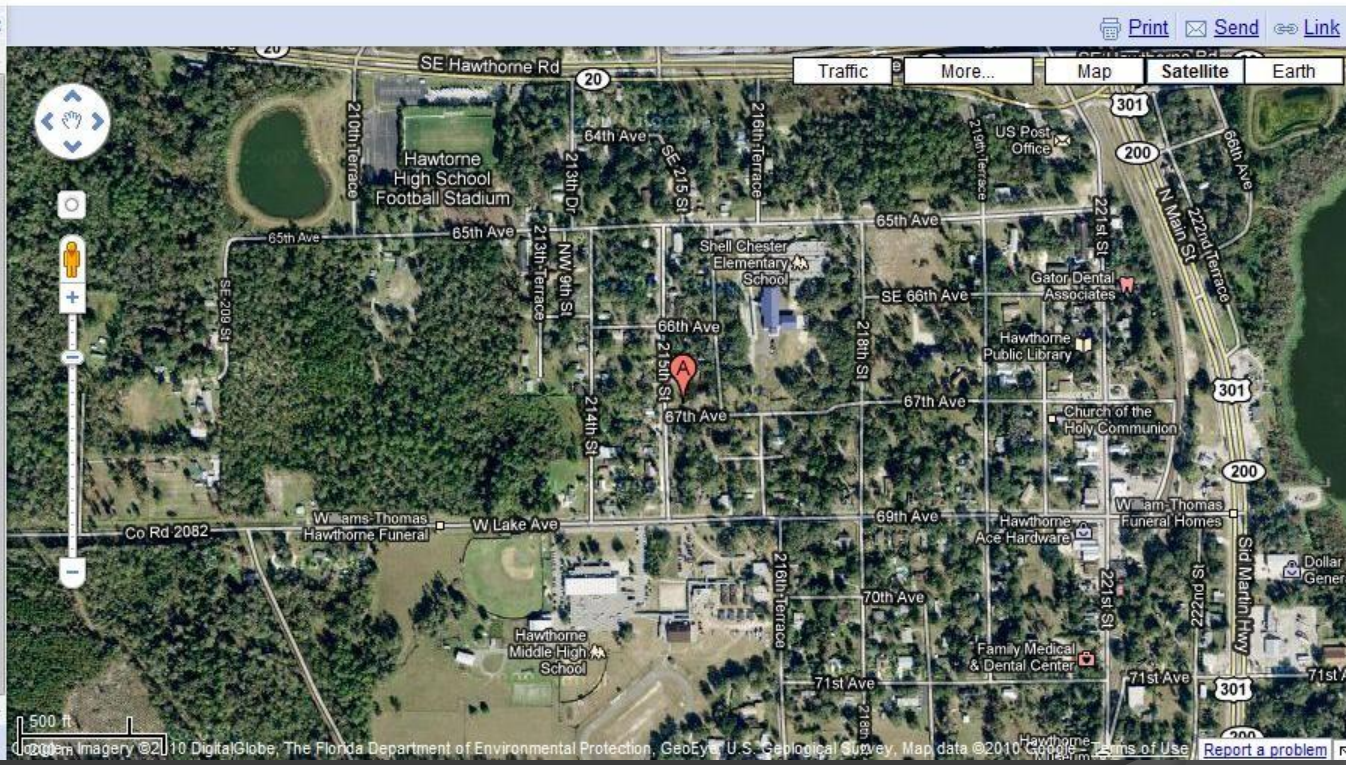
**Places**

[Hawthorne High School](#)

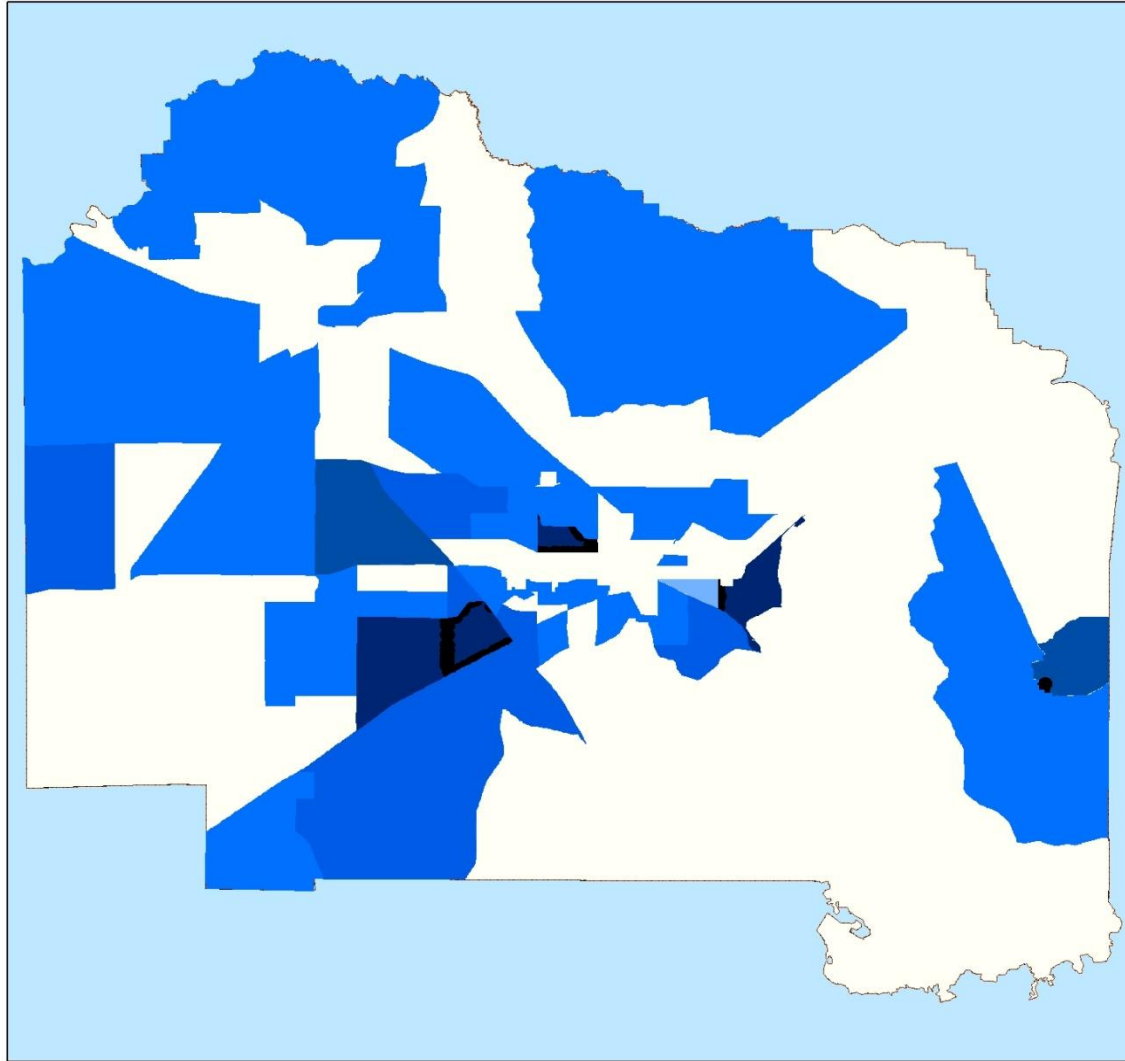
**Northwest Florida Beaches** Ads

Vacation Rentals in Seagrove and other beach communities.  
[www.GarrettRealty.com](http://www.GarrettRealty.com)  
Florida

4281 SW ... | 4281 sw ... | 4281 Arc... | gainsvi...



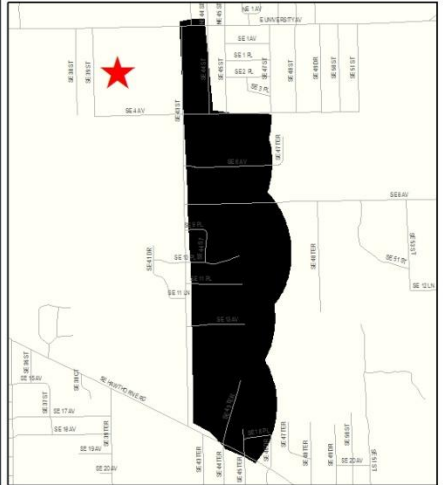
# East Gainesville Community Center



- Hawthorne Zone
- East and West Gainesville Zones
- Blocks Containing Bus Stops and Schools
- Blocks Containing Schools
- Intersecting High Children and High Incident Blocks
- Highest Numbers of Children
- Top Rates of Neglect, Dom. Violence, and Homelessness
- Alachua County Boundary

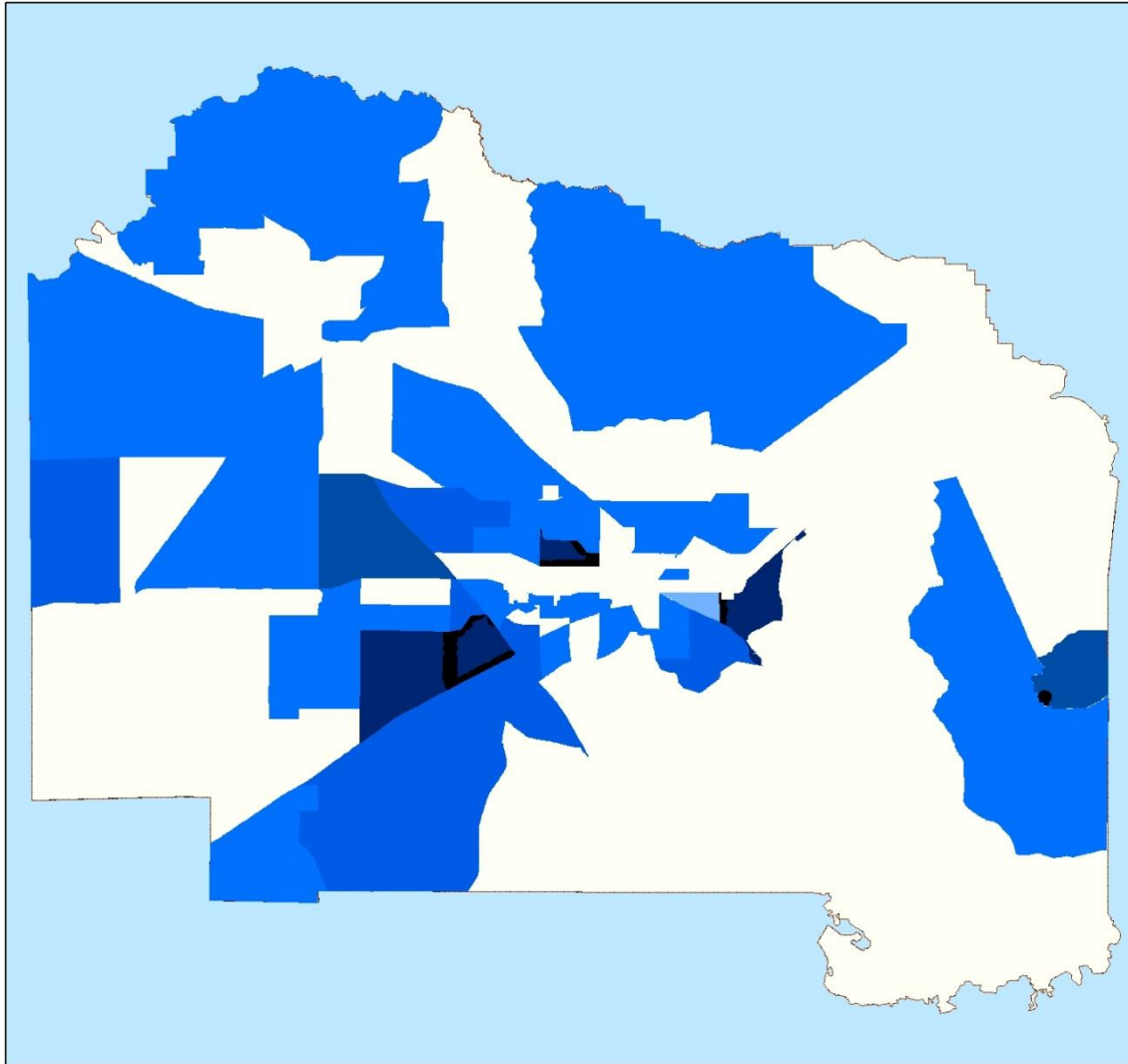
This center was chosen because:

- High Incident Rate
- High Concentration of Children
- Close to Schools
- Within 0.25 Miles of a Bus Stop



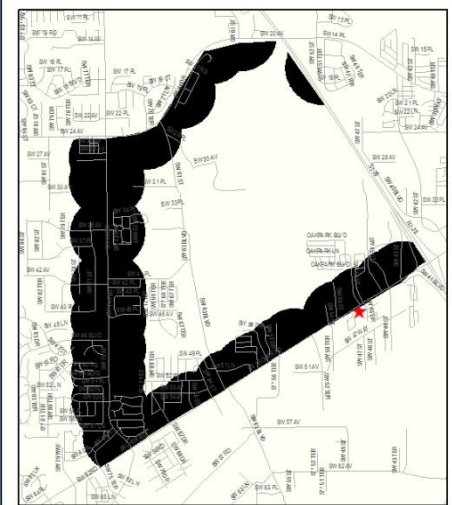


# West Gainesville Community Center

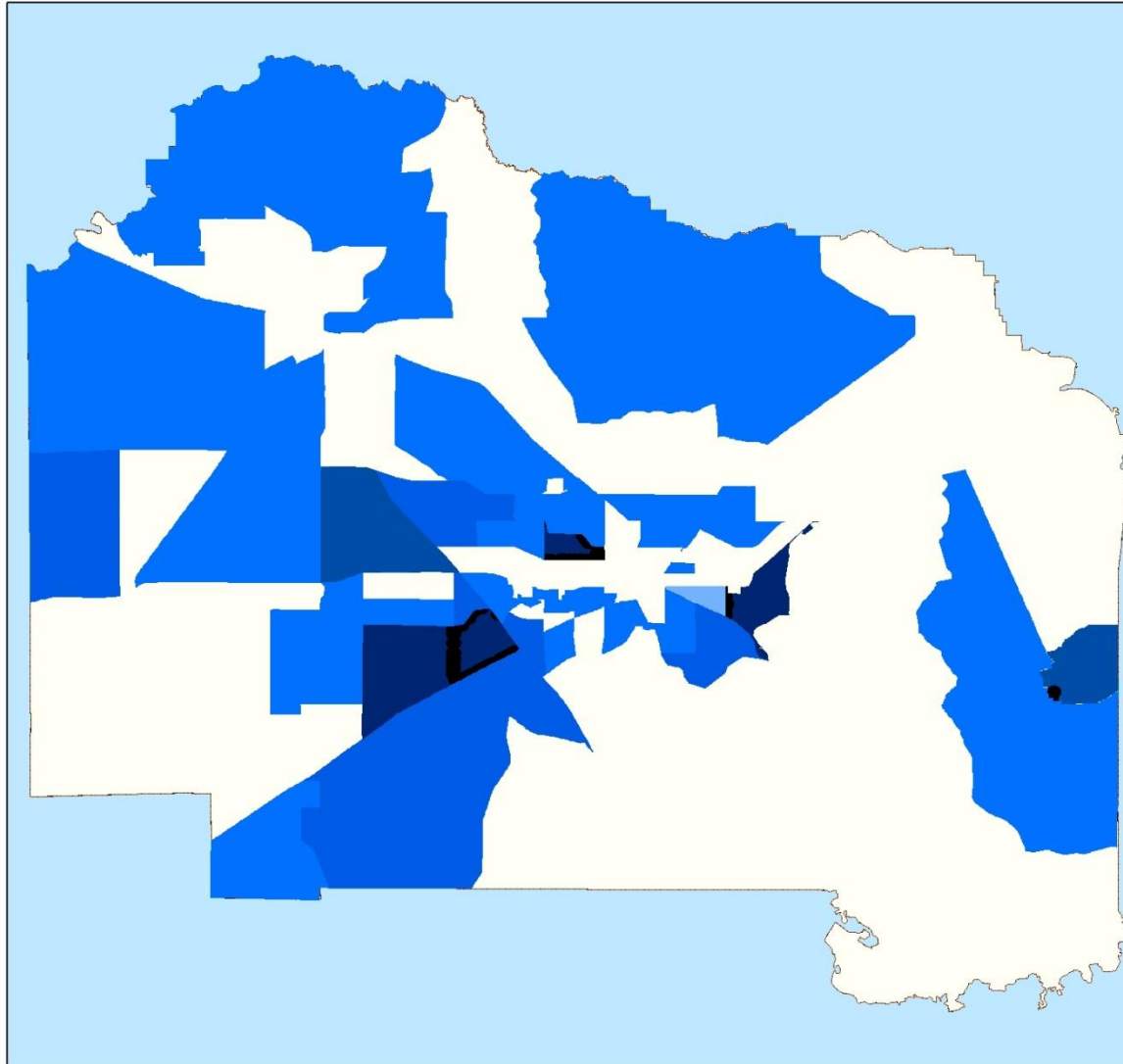


This center was chosen because:

- High Incident Rate
- High Concentration of Children
- Close to Schools
- Within 0.25 Miles of a Bus Stop

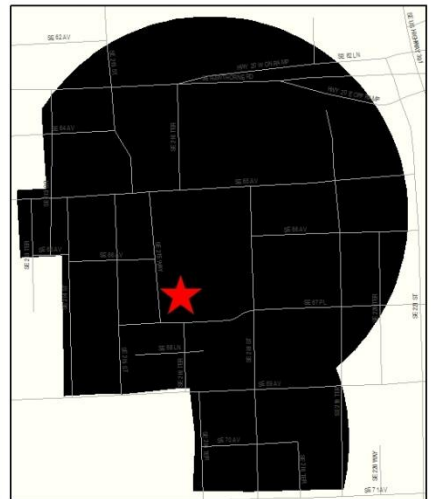


# Hawthorne Community Center



This center was chosen because:

- High Incident Rate
- High Concentration of Children
- Within 0.25 Miles of a School



# Conclusion

- Provide more community centers
- Lack of detailed information on demographics of domestic violence and crime incidents
- Lack of information on current zoning
- Permits and other information about requirements for building a community center in commercial and residentially zoned land